

## DATASHEET

# PATZ1 Rabbit Polyclonal Antibody

CAT. NO. APA16420

### KEY FEATURES

Target	PATZ1	Source / Host	Rabbit
Reactivity	Human, Mouse, Rat	Clonality	Polyclonal
Applications	WB	Conjugation	Unconjugated
Form / Buffer	Liquid in 0.42% Potassium phosphate, 0.87% Sodium chloride, pH 7.3, 30% glycerol, and 0.01% sodium azide.		Storage at -20°C

### BACKGROUND

Transcriptional regulator that plays a role in many biological processes such as embryogenesis, senescence, T-cell development or neurogenesis. Interacts with the TP53 protein to control genes that are important in proliferation and in the DNA-damage response. Mechanistically, the interaction inhibits the DNA binding and transcriptional activity of TP53/p53. Part of the transcriptional network modulating regulatory T-cell development and controls the generation of the regulatory T-cell pool under homeostatic conditions.

### APPLICATION

To ensure optimal assay performance, AREX recommends conducting reagent titration tailored to each testing system for optimal detection results.

WB	1:500 - 1:2000
----	----------------

\*Results are sample-specific. Please refer to your local assay conditions and test parameters for reference.

### PRODUCT OVERVIEW

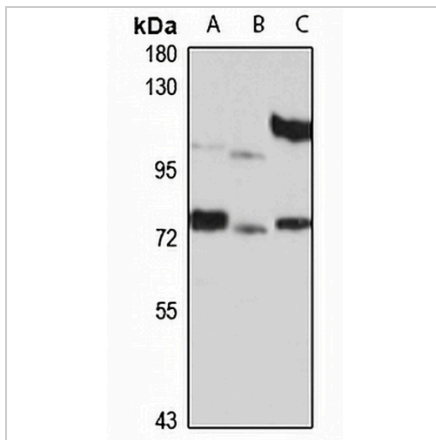
Description	Rabbit polyclonal antibody to PATZ1
Specificity	Recognizes endogenous levels of PATZ1 protein
Antibody Type	Primary antibody
Immunogen	Recombinant fusion protein of human PATZ1. The exact sequence is proprietary.
Purification	The antibody was purified by immunogen affinity chromatography.
Molecular Weight	Predicted: 57; Observed: 74 kD
Form/Buffer	Liquid in 0.42% Potassium phosphate, 0.87% Sodium chloride, pH 7.3, 30% glycerol, and 0.01% sodium azide.
Alternative Names	PATZ; RIAZ; ZBTB19; ZNF278; ZSG; POZ- AT hook- and zinc finger-containing protein 1; BTB/POZ domain zinc finger transcription factor; Protein kinase A RI subunit alpha-associated protein; Zinc finger and BTB domain-containing protein 19; Zinc finger protein 278; Zinc finger sarcoma gene protein
Gene Symbol	PATZ1
Entrez Gene	23598(Human)
SwissProt	Q9HBE1(Human)

\*AREX continuously optimizes our products. Webpage content may not reflect the latest updates. For inquiries, please contact [info@arexbio.com](mailto:info@arexbio.com) or your local distributor.

\*Clone Number, Reactivity, Source/Host and Clonality can be found in the product name and Key Features section above.

**DATASHEET****PATZ1 Rabbit Polyclonal Antibody**

CAT. NO. APA16420

**DATA**

Western blot analysis of PATZ1 expression in HepG2 (A), mouse lung (B), rat kidney (C) whole cell lysates. (Predicted band size: 57; 69; 74 kD; Observed band size: 74 kD)

**STORAGE**

Store at 4°C short term. For long term storage, store at -20°C, avoiding freeze/thaw cycles.

**NOTE**

For Research Use Only. Not for diagnostic, therapeutics, prophylactic or in vivo use.