

**DATASHEET**

**PBX1 Rabbit Polyclonal Antibody**

CAT. NO. APA16421

**KEY FEATURES**

Target	PBX1	Source / Host	Rabbit
Reactivity	Human, Rat	Clonality	Polyclonal
Applications	WB	Conjugation	Unconjugated
Form / Buffer	Liquid in 0.42% Potassium phosphate, 0.87% Sodium chloride, pH 7.3, 30% glycerol, and 0.01% sodium azide.		Storage at-20°C

**BACKGROUND**

Transcription factor which binds the DNA sequence 5'-TGATTGAT-3' as part of a heterodimer with HOX proteins such as HOXA1, HOXA5, HOXB7 and HOXB8 . Binds to the DNA sequence 5'-TGATTGAC-3' in complex with a nuclear factor which is not a class I HOX protein . Has also been shown to bind the DNA sequence 5'-ATCAATCAA-3' cooperatively with HOXA5, HOXB7, HOXB8, HOXC8 and HOXD4 . Acts as a transcriptional activator of PF4 in complex with MEIS1 . Also activates transcription of SOX3 in complex with MEIS1 by binding to the 5'-TGATTGAC-3' consensus sequence . In natural killer cells, binds to the NFIL3 promoter and acts as a transcriptional activator of NFIL3, promoting natural killer cell development .

**APPLICATION**

To ensure optimal assay performance, AREX recommends conducting reagent titration tailored to each testing system for optimal detection results.

WB	1:500 - 1:2000
----	----------------

\*Results are sample-specific. Please refer to your local assay conditions and test parameters for reference.

**PRODUCT OVERVIEW**

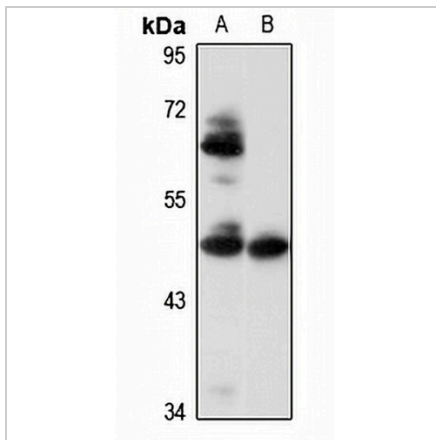
Description	Rabbit polyclonal antibody to PBX1
Specificity	Recognizes endogenous levels of PBX1 protein
Antibody Type	Primary antibody
Immunogen	KLH-conjugated synthetic peptide of human PBX1. The exact sequence is proprietary.
Purification	The antibody was purified by immunogen affinity chromatography.
Molecular Weight	Predicted: 38; Observed: 50 kD
Form/Buffer	Liquid in 0.42% Potassium phosphate, 0.87% Sodium chloride, pH 7.3, 30% glycerol, and 0.01% sodium azide.
Alternative Names	PRL; Pre-B-cell leukemia transcription factor 1; Homeobox protein PBX1; Homeobox protein PRL
Gene Symbol	PBX1
Entrez Gene	5087(Human)
SwissProt	P40424(Human)

\*AREX continuously optimizes our products. Webpage content may not reflect the latest updates. For inquiries, please contact [info@arexbio.com](mailto:info@arexbio.com) or your local distributor.

\*Clone Number, Reactivity, Source/Host and Clonality can be found in the product name and Key Features section above.

**DATASHEET****PBX1 Rabbit Polyclonal Antibody**

CAT. NO. APA16421

**DATA**

Western blot analysis of PBX1 expression in SKOV3 (A), rat testis (B) whole cell lysates. (Predicted band size: 38; 46 kD; Observed band size: 50 kD)

**STORAGE**

Store at 4°C short term. For long term storage, store at -20°C, avoiding freeze/thaw cycles.

**NOTE**

For Research Use Only. Not for diagnostic, therapeutics, prophylactic or in vivo use.