

DATASHEET

PBX1 Rabbit Polyclonal Antibody

CAT. NO. APA16422

KEY FEATURES

Target	PBX1	Source / Host	Rabbit
Reactivity	Human, Mouse	Clonality	Polyclonal
Applications	WB	Conjugation	Unconjugated
Form / Buffer	Liquid in 0.42% Potassium phosphate, 0.87% Sodium chloride, pH 7.3, 30% glycerol, and 0.01% sodium azide.		Storage at-20°C

BACKGROUND

Transcription factor which binds the DNA sequence 5'-TGATTGAT-3' as part of a heterodimer with HOX proteins such as HOXA1, HOXA5, HOXB7 and HOXB8 . Binds to the DNA sequence 5'-TGATTGAC-3' in complex with a nuclear factor which is not a class I HOX protein . Has also been shown to bind the DNA sequence 5'-ATCAATCAA-3' cooperatively with HOXA5, HOXB7, HOXB8, HOXC8 and HOXD4 . Acts as a transcriptional activator of PF4 in complex with MEIS1 . Also activates transcription of SOX3 in complex with MEIS1 by binding to the 5'-TGATTGAC-3' consensus sequence . In natural killer cells, binds to the NFIL3 promoter and acts as a transcriptional activator of NFIL3, promoting natural killer cell development .

APPLICATION

To ensure optimal assay performance, AREX recommends conducting reagent titration tailored to each testing system for optimal detection results.

WB	1:500 - 1:2000
----	----------------

*Results are sample-specific. Please refer to your local assay conditions and test parameters for reference.

PRODUCT OVERVIEW

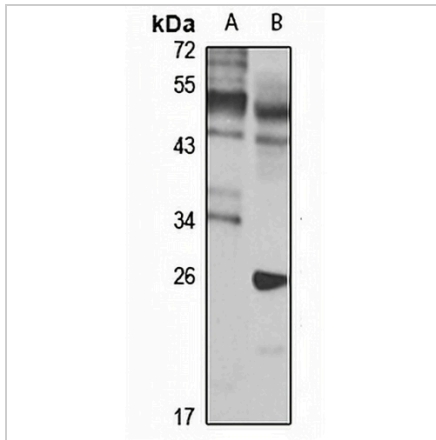
Description	Rabbit polyclonal antibody to PBX1
Specificity	Recognizes endogenous levels of PBX1 protein
Antibody Type	Primary antibody
Immunogen	Recombinant fusion protein of human PBX1. The exact sequence is proprietary.
Purification	The antibody was purified by immunogen affinity chromatography.
Molecular Weight	Predicted: 38; Observed: 55; 46 kD
Form/Buffer	Liquid in 0.42% Potassium phosphate, 0.87% Sodium chloride, pH 7.3, 30% glycerol, and 0.01% sodium azide.
Alternative Names	PRL; Pre-B-cell leukemia transcription factor 1; Homeobox protein PBX1; Homeobox protein PRL
Gene Symbol	PBX1
Entrez Gene	5087(Human); 18514(Mouse)
SwissProt	P40424(Human); P41778(Mouse)

*AREX continuously optimizes our products. Webpage content may not reflect the latest updates. For inquiries, please contact info@arexbio.com or your local distributor.

*Clone Number, Reactivity, Source/Host and Clonality can be found in the product name and Key Features section above.

DATASHEET**PBX1 Rabbit Polyclonal Antibody**

CAT. NO. APA16422

DATA**STORAGE**

Store at 4°C short term. For long term storage, store at -20°C, avoiding freeze/thaw cycles.

NOTE

For Research Use Only. Not for diagnostic, therapeutics, prophylactic or in vivo use.