

DATASHEET

Protocadherin gamma-C3 Rabbit Polyclonal Antibody

CAT. NO. APA16432

KEY FEATURES

Target	Protocadherin gamma-C3	Source / Host	Rabbit
Reactivity	Human, Mouse, Rat	Clonality	Polyclonal
Applications	WB	Conjugation	Unconjugated
Form / Buffer	Liquid in 0.42% Potassium phosphate, 0.87% Sodium chloride, pH 7.3, 30% glycerol, and 0.01% sodium azide.		Storage at-20°C

BACKGROUND

Potential calcium-dependent cell-adhesion protein. May be involved in the establishment and maintenance of specific neuronal connections in the brain.

APPLICATION

To ensure optimal assay performance, AREX recommends conducting reagent titration tailored to each testing system for optimal detection results.

WB	1:500 - 1:2000
----	----------------

*Results are sample-specific. Please refer to your local assay conditions and test parameters for reference.

PRODUCT OVERVIEW

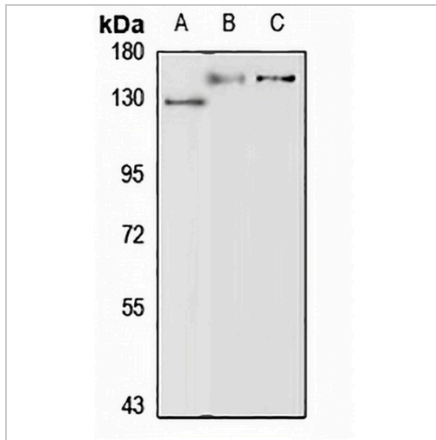
Description	Rabbit polyclonal antibody to Protocadherin gamma-C3
Specificity	Recognizes endogenous levels of Protocadherin gamma-C3 protein
Antibody Type	Primary antibody
Immunogen	Recombinant fusion protein of human Protocadherin gamma-C3. The exact sequence is proprietary.
Purification	The antibody was purified by immunogen affinity chromatography.
Molecular Weight	Predicted: 94; Observed: 140 kD
Form/Buffer	Liquid in 0.42% Potassium phosphate, 0.87% Sodium chloride, pH 7.3, 30% glycerol, and 0.01% sodium azide.
Alternative Names	PCDH2; Protocadherin gamma-C3; PCDH-gamma-C3; Protocadherin-2; Protocadherin-43; PC-43
Gene Symbol	PCDHGC3
Entrez Gene	5098(Human)
SwissProt	Q9UN70(Human)

*AREX continuously optimizes our products. Webpage content may not reflect the latest updates. For inquiries, please contact info@arexbio.com or your local distributor.

*Clone Number, Reactivity, Source/Host and Clonality can be found in the product name and Key Features section above.

DATASHEET**Protocadherin gamma-C3 Rabbit Polyclonal Antibody**

CAT. NO. APA16432

DATA

Western blot analysis of Protocadherin gamma-C3 expression in SW620 (A), mouse liver (B), mouse brain (C) whole cell lysates. (Predicted band size: 94; 101 kD; Observed band size: 140 kD)

STORAGE

Store at 4°C short term. For long term storage, store at -20°C, avoiding freeze/thaw cycles.

NOTE

For Research Use Only. Not for diagnostic, therapeutics, prophylactic or in vivo use.