

DATASHEET

PCF11 Rabbit Polyclonal Antibody

CAT. NO. APA16433

KEY FEATURES

Target	PCF11	Source / Host	Rabbit
Reactivity	Human, Mouse, Rat	Clonality	Polyclonal
Applications	WB	Conjugation	Unconjugated
Form / Buffer	Liquid in 0.42% Potassium phosphate, 0.87% Sodium chloride, pH 7.3, 30% glycerol, and 0.01% sodium azide.		Storage at -20°C

BACKGROUND

Component of pre-mRNA cleavage complex II, which promotes transcription termination by RNA polymerase II.

APPLICATION

To ensure optimal assay performance, AREX recommends conducting reagent titration tailored to each testing system for optimal detection results.

WB	1:500 - 1:2000
----	----------------

*Results are sample-specific. Please refer to your local assay conditions and test parameters for reference.

PRODUCT OVERVIEW

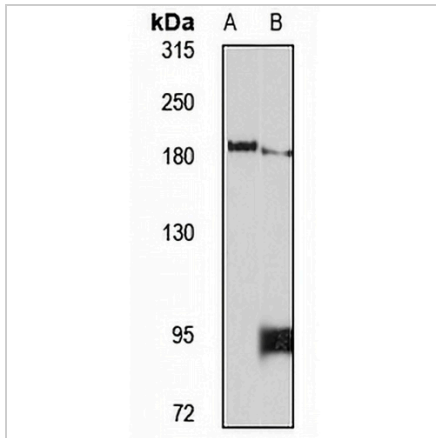
Description	Rabbit polyclonal antibody to PCF11
Specificity	Recognizes endogenous levels of PCF11 protein
Antibody Type	Primary antibody
Immunogen	Recombinant fusion protein of human PCF11. The exact sequence is proprietary.
Purification	The antibody was purified by immunogen affinity chromatography.
Molecular Weight	Predicted: 173 kD; Observed: 180 kD
Form/Buffer	Liquid in 0.42% Potassium phosphate, 0.87% Sodium chloride, pH 7.3, 30% glycerol, and 0.01% sodium azide.
Alternative Names	KIAA0824; Pre-mRNA cleavage complex 2 protein Pcf11; Pre-mRNA cleavage complex II protein Pcf11
Gene Symbol	PCF11
Entrez Gene	51585(Human)
SwissProt	O94913(Human)

*AREX continuously optimizes our products. Webpage content may not reflect the latest updates. For inquiries, please contact info@arexbio.com or your local distributor.

*Clone Number, Reactivity, Source/Host and Clonality can be found in the product name and Key Features section above.

DATASHEET**PCF11 Rabbit Polyclonal Antibody**

CAT. NO. APA16433

DATA

Western blot analysis of PCF11 expression in Jurkat (A), mouse testis (B) whole cell lysates. (Predicted band size: 173 kD; Observed band size: 180 kD)

STORAGE

Store at 4°C short term. For long term storage, store at -20°C, avoiding freeze/thaw cycles.

NOTE

For Research Use Only. Not for diagnostic, therapeutics, prophylactic or in vivo use.