

DATASHEET

PC5 Rabbit Polyclonal Antibody

CAT. NO. APA16437

KEY FEATURES

Target	PC5	Source / Host	Rabbit
Reactivity	Human, Mouse, Rat	Clonality	Polyclonal
Applications	WB	Conjugation	Unconjugated
Form / Buffer	Liquid in 0.42% Potassium phosphate, 0.87% Sodium chloride, pH 7.3, 30% glycerol, and 0.01% sodium azide.		Storage at -20°C

BACKGROUND

Serine endoprotease that processes various proproteins by cleavage at paired basic amino acids, recognizing the RXXX[KR]R consensus motif. Likely functions in the constitutive and regulated secretory pathways. Plays an essential role in pregnancy establishment by proteolytic activation of a number of important factors such as BMP2, CALD1 and alpha-integrins.

APPLICATION

To ensure optimal assay performance, AREX recommends conducting reagent titration tailored to each testing system for optimal detection results.

WB	1:500 - 1:2000
----	----------------

*Results are sample-specific. Please refer to your local assay conditions and test parameters for reference.

PRODUCT OVERVIEW

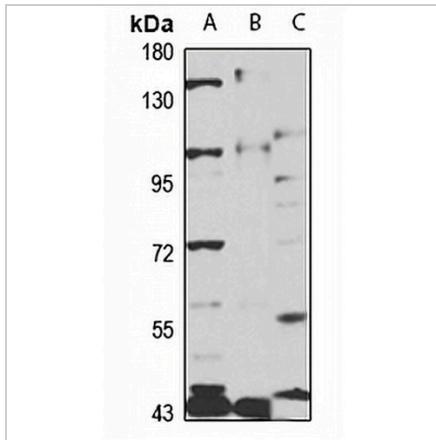
Description	Rabbit polyclonal antibody to PC5
Specificity	Recognizes endogenous levels of PC5 protein
Antibody Type	Primary antibody
Immunogen	Recombinant fusion protein of human PC5. The exact sequence is proprietary.
Purification	The antibody was purified by immunogen affinity chromatography.
Molecular Weight	Predicted: 101; Observed: 102 kD
Form/Buffer	Liquid in 0.42% Potassium phosphate, 0.87% Sodium chloride, pH 7.3, 30% glycerol, and 0.01% sodium azide.
Alternative Names	PC5; PC6; Proprotein convertase subtilisin/kexin type 5; Proprotein convertase 5; PC5; Proprotein convertase 6; PC6; hPC6; Subtilisin/kexin-like protease PC5
Gene Symbol	PCSK5
Entrez Gene	5125(Human); 18552(Mouse); 116548(Rat)
SwissProt	Q92824(Human); Q04592(Mouse); P41413(Rat)

*AREX continuously optimizes our products. Webpage content may not reflect the latest updates. For inquiries, please contact info@arexbio.com or your local distributor.

*Clone Number, Reactivity, Source/Host and Clonality can be found in the product name and Key Features section above.

DATASHEET**PC5 Rabbit Polyclonal Antibody**

CAT. NO. APA16437

DATA

Western blot analysis of PC5 expression in SW480 (A), mouse lung (B), rat brain (C) whole cell lysates. (Predicted band size: 101; 206 kD; Observed band size: 102 kD)

STORAGE

Store at 4°C short term. For long term storage, store at -20°C, avoiding freeze/thaw cycles.

NOTE

For Research Use Only. Not for diagnostic, therapeutics, prophylactic or in vivo use.