

DATASHEET

PCYT2 Rabbit Polyclonal Antibody

CAT. NO. APA16439

KEY FEATURES

Target	PCYT2	Source / Host	Rabbit
Reactivity	Human, Mouse, Rat	Clonality	Polyclonal
Applications	WB	Conjugation	Unconjugated
Form / Buffer	Liquid in 0.42% Potassium phosphate, 0.87% Sodium chloride, pH 7.3, 30% glycerol, and 0.01% sodium azide.		Storage at -20°C

BACKGROUND

Ethanolamine-phosphate cytidyltransferase that catalyzes the second step in the synthesis of phosphatidylethanolamine (PE) from ethanolamine via the CDP-ethanolamine pathway from ethanolamine via the CDP-ethanolamine pathway . Phosphatidylethanolamine is a dominant inner-leaflet phospholipid in cell membranes, where it plays a role in membrane function by structurally stabilizing membrane-anchored proteins, and participates in important cellular processes such as cell division, cell fusion, blood coagulation, and apoptosis .

APPLICATION

To ensure optimal assay performance, AREX recommends conducting reagent titration tailored to each testing system for optimal detection results.

WB	1:500 - 1:2000
----	----------------

*Results are sample-specific. Please refer to your local assay conditions and test parameters for reference.

PRODUCT OVERVIEW

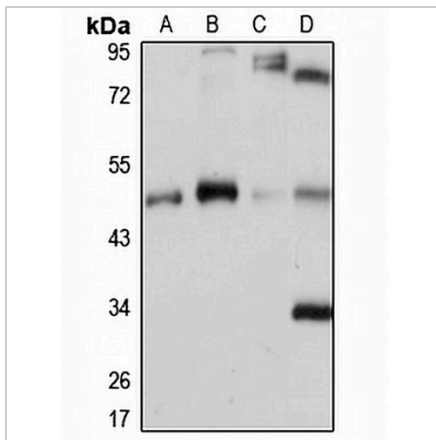
Description	Rabbit polyclonal antibody to PCYT2
Specificity	Recognizes endogenous levels of PCYT2 protein
Antibody Type	Primary antibody
Immunogen	Recombinant fusion protein of human PCYT2. The exact sequence is proprietary.
Purification	The antibody was purified by immunogen affinity chromatography.
Molecular Weight	Predicted: 35; Observed: 44 kD
Form/Buffer	Liquid in 0.42% Potassium phosphate, 0.87% Sodium chloride, pH 7.3, 30% glycerol, and 0.01% sodium azide.
Alternative Names	Ethanolamine-phosphate cytidyltransferase; CTP:phosphoethanolamine cytidyltransferase; Phosphorylethanolamine transferase
Gene Symbol	PCYT2
Entrez Gene	5833(Human); 68671(Mouse); 89841(Rat)
SwissProt	Q99447(Human); Q922E4(Mouse); O88637(Rat)

*AREX continuously optimizes our products. Webpage content may not reflect the latest updates. For inquiries, please contact info@arexbio.com or your local distributor.

*Clone Number, Reactivity, Source/Host and Clonality can be found in the product name and Key Features section above.

DATASHEET**PCYT2 Rabbit Polyclonal Antibody**

CAT. NO. APA16439

DATA

Western blot analysis of PCYT2 expression in HepG2 (A), HEK293T (B), mouse brain (C), rat liver (D) whole cell lysates. (Predicted band size: 35; 40; 43; 45 kD; Observed band size: 44 kD)

STORAGE

Store at 4°C short term. For long term storage, store at -20°C, avoiding freeze/thaw cycles.

NOTE

For Research Use Only. Not for diagnostic, therapeutics, prophylactic or in vivo use.