

DATASHEET

PDE6A Rabbit Polyclonal Antibody

CAT. NO. APA16446

KEY FEATURES

Target	PDE6A	Source / Host	Rabbit
Reactivity	Human, Mouse, Rat	Clonality	Polyclonal
Applications	WB, IHC	Conjugation	Unconjugated
Form / Buffer	Liquid in 0.42% Potassium phosphate, 0.87% Sodium chloride, pH 7.3, 30% glycerol, and 0.01% sodium azide.		Storage at -20°C

BACKGROUND

Rod-specific cGMP phosphodiesterase that catalyzes the hydrolysis of 3',5'-cyclic GMP. This protein participates in processes of transmission and amplification of the visual signal.

APPLICATION

To ensure optimal assay performance, AREX recommends conducting reagent titration tailored to each testing system for optimal detection results.

WB	1:500 - 1:2000
IHC	1:50 - 1:200

*Results are sample-specific. Please refer to your local assay conditions and test parameters for reference.

PRODUCT OVERVIEW

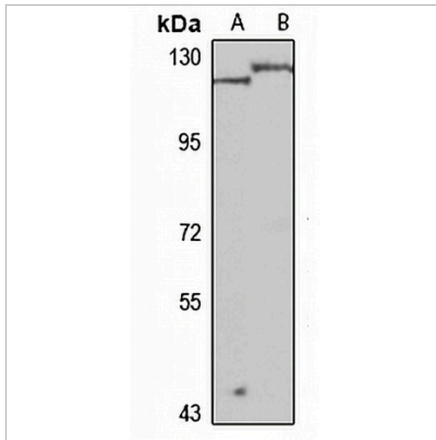
Description	Rabbit polyclonal antibody to PDE6A
Specificity	Recognizes endogenous levels of PDE6A protein
Antibody Type	Primary antibody
Immunogen	Recombinant fusion protein of human PDE6A. The exact sequence is proprietary.
Purification	The antibody was purified by immunogen affinity chromatography.
Molecular Weight	Predicted: 99 kD; Observed: 120 kD
Form/Buffer	Liquid in 0.42% Potassium phosphate, 0.87% Sodium chloride, pH 7.3, 30% glycerol, and 0.01% sodium azide.
Alternative Names	PDEA; Rod cGMP-specific 3' 5'-cyclic phosphodiesterase subunit alpha; GMP-PDE alpha; PDE V-B1
Gene Symbol	PDE6A
Entrez Gene	5145(Human)
SwissProt	P16499(Human); P27664(Mouse)

*AREX continuously optimizes our products. Webpage content may not reflect the latest updates. For inquiries, please contact info@arexbio.com or your local distributor.

*Clone Number, Reactivity, Source/Host and Clonality can be found in the product name and Key Features section above.

DATASHEET**PDE6A Rabbit Polyclonal Antibody**

CAT. NO. APA16446

DATA

Western blot analysis of PDE6A expression in BT474 (A), rat brain (B) whole cell lysates. (Predicted band size: 99 kD; Observed band size: 120 kD)

STORAGE

Store at 4°C short term. For long term storage, store at -20°C, avoiding freeze/thaw cycles.

NOTE

For Research Use Only. Not for diagnostic, therapeutics, prophylactic or in vivo use.