

DATASHEET

PDE6D Rabbit Polyclonal Antibody

CAT. NO. APA16447

KEY FEATURES

Target	PDE6D	Source / Host	Rabbit
Reactivity	Human, Mouse	Clonality	Polyclonal
Applications	WB, IHC, IF/ICC	Conjugation	Unconjugated
Form / Buffer	Liquid in 0.42% Potassium phosphate, 0.87% Sodium chloride, pH 7.3, 30% glycerol, and 0.01% sodium azide.		Storage at -20°C

BACKGROUND

Promotes the release of prenylated target proteins from cellular membranes . Modulates the activity of prenylated or palmitoylated Ras family members by regulating their subcellular location . Required for normal ciliary targeting of farnesylated target proteins, such as INPP5E . Required for RAB28 localization to the cone cell outer segments in the retina . Modulates the subcellular location of target proteins by acting as a GTP specific dissociation inhibitor (GDI) . Increases the affinity of ARL3 for GTP by several orders of magnitude. Stabilizes ARL3-GTP by decreasing the nucleotide dissociation rate .

APPLICATION

To ensure optimal assay performance, AREX recommends conducting reagent titration tailored to each testing system for optimal detection results.

WB	1:500 - 1:2000
IHC	1:50 - 1:200
IF/ICC	1:50 - 1:200

*Results are sample-specific. Please refer to your local assay conditions and test parameters for reference.

PRODUCT OVERVIEW

Description	Rabbit polyclonal antibody to PDE6D
Specificity	Recognizes endogenous levels of PDE6D protein
Antibody Type	Primary antibody
Immunogen	Recombinant fusion protein of human PDE6D. The exact sequence is proprietary.
Purification	The antibody was purified by immunogen affinity chromatography.
Molecular Weight	Predicted: 17 kD; Observed: 14-15 kD
Form/Buffer	Liquid in 0.42% Potassium phosphate, 0.87% Sodium chloride, pH 7.3, 30% glycerol, and 0.01% sodium azide.
Alternative Names	PD6D; Retinal rod rhodopsin-sensitive cGMP 3' 5'-cyclic phosphodiesterase subunit delta; GMP-PDE delta; Protein p17
Gene Symbol	PDE6D
Entrez Gene	5147(Human); 18582(Mouse)
SwissProt	O43924(Human); O55057(Mouse)

*AREX continuously optimizes our products. Webpage content may not reflect the latest updates. For inquiries, please contact info@arexbio.com or your local distributor.

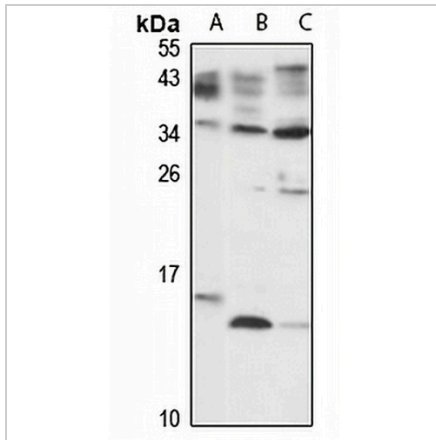
*Clone Number, Reactivity, Source/Host and Clonality can be found in the product name and Key Features section above.

DATASHEET

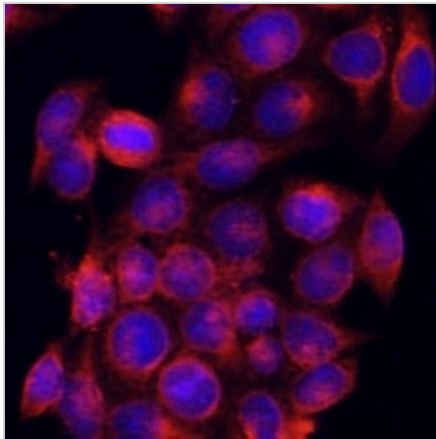
PDE6D Rabbit Polyclonal Antibody

CAT. NO. APA16447

DATA



Western blot analysis of PDE6D expression in HT29 (A), mouse brain (B), mouse kidney (C) whole cell lysates. (Predicted band size: 17 kD; Observed band size: 14-15 kD)



Immunofluorescent analysis of PDE6D staining in U2OS cells. Formalin-fixed cells were permeabilized with 0.1% Triton X-100 in TBS for 5-10 minutes and blocked with 3% BSA-PBS for 30 minutes at room temperature. Cells were probed with the primary antibody in 3% BSA-PBS and incubated overnight at 4 °C in a humidified chamber. Cells were washed with PBST and incubated with a Alexa Fluor 594-conjugated secondary antibody (red) in PBS at room temperature in the dark.

STORAGE

Store at 4°C short term. For long term storage, store at -20°C, avoiding freeze/thaw cycles.

NOTE

For Research Use Only. Not for diagnostic, therapeutics, prophylactic or in vivo use.