

DATASHEET

PDE7A Rabbit Polyclonal Antibody

CAT. NO. APA16448

KEY FEATURES

Target	PDE7A	Source / Host	Rabbit
Reactivity	Human, Mouse, Rat	Clonality	Polyclonal
Applications	WB	Conjugation	Unconjugated
Form / Buffer	Liquid in 0.42% Potassium phosphate, 0.87% Sodium chloride, pH 7.3, 30% glycerol, and 0.01% sodium azide.	Storage	at-20°C

BACKGROUND

Hydrolyzes the second messenger cAMP, which is a key regulator of many important physiological processes . May have a role in muscle signal transduction .

APPLICATION

To ensure optimal assay performance, AREX recommends conducting reagent titration tailored to each testing system for optimal detection results.

WB	1:500 - 1:2000
----	----------------

*Results are sample-specific. Please refer to your local assay conditions and test parameters for reference.

PRODUCT OVERVIEW

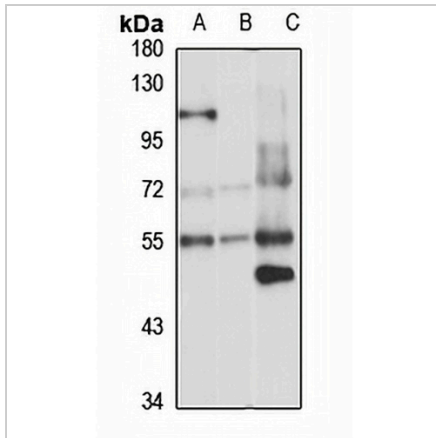
Description	Rabbit polyclonal antibody to PDE7A
Specificity	Recognizes endogenous levels of PDE7A protein
Antibody Type	Primary antibody
Immunogen	Recombinant fusion protein of human PDE7A. The exact sequence is proprietary.
Purification	The antibody was purified by immunogen affinity chromatography.
Molecular Weight	Predicted: 48; Observed: 56 kD
Form/Buffer	Liquid in 0.42% Potassium phosphate, 0.87% Sodium chloride, pH 7.3, 30% glycerol, and 0.01% sodium azide.
Alternative Names	High affinity cAMP-specific 3' 5'-cyclic phosphodiesterase 7A; HCP1; TM22
Gene Symbol	PDE7A
Entrez Gene	5150(Human); 18583(Mouse)
SwissProt	Q13946(Human); P70453(Mouse); O08593(Rat)

*AREX continuously optimizes our products. Webpage content may not reflect the latest updates. For inquiries, please contact info@arexbio.com or your local distributor.

*Clone Number, Reactivity, Source/Host and Clonality can be found in the product name and Key Features section above.

DATASHEET**PDE7A Rabbit Polyclonal Antibody**

CAT. NO. APA16448

DATA

Western blot analysis of PDE7A expression in Jurkat (A), mouse testis (B), rat brain (C) whole cell lysates. (Predicted band size: 48; 52; 55 kD; Observed band size: 56 kD)

STORAGE

Store at 4°C short term. For long term storage, store at -20°C, avoiding freeze/thaw cycles.

NOTE

For Research Use Only. Not for diagnostic, therapeutics, prophylactic or in vivo use.