

DATASHEET

PDE7B Rabbit Polyclonal Antibody

CAT. NO. APA16449

KEY FEATURES

Target	PDE7B	Source / Host	Rabbit
Reactivity	Human, Mouse, Rat	Clonality	Polyclonal
Applications	WB	Conjugation	Unconjugated
Form / Buffer	Liquid in 0.42% Potassium phosphate, 0.87% Sodium chloride, pH 7.3, 30% glycerol, and 0.01% sodium azide.	Storage	at-20°C

BACKGROUND

Hydrolyzes the second messenger cAMP, which is a key regulator of many important physiological processes . May be involved in the control of cAMP-mediated neural activity and cAMP metabolism in the brain .

APPLICATION

To ensure optimal assay performance, AREX recommends conducting reagent titration tailored to each testing system for optimal detection results.

WB	1:500 - 1:2000
----	----------------

*Results are sample-specific. Please refer to your local assay conditions and test parameters for reference.

PRODUCT OVERVIEW

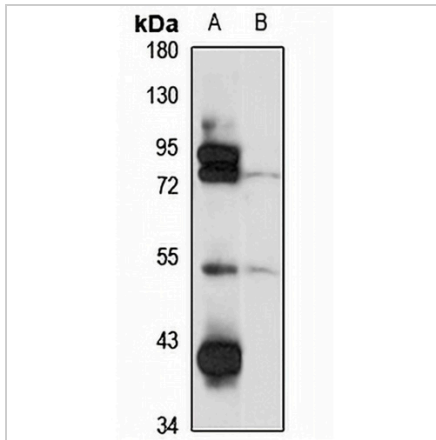
Description	Rabbit polyclonal antibody to PDE7B
Specificity	Recognizes endogenous levels of PDE7B protein
Antibody Type	Primary antibody
Immunogen	Recombinant fusion protein of human PDE7B. The exact sequence is proprietary.
Purification	The antibody was purified by immunogen affinity chromatography.
Molecular Weight	Predicted: 51 kD; Observed: 52 kD
Form/Buffer	Liquid in 0.42% Potassium phosphate, 0.87% Sodium chloride, pH 7.3, 30% glycerol, and 0.01% sodium azide.
Alternative Names	cAMP-specific 3' 5'-cyclic phosphodiesterase 7B
Gene Symbol	PDE7B
Entrez Gene	27115(Human); 29863(Mouse)
SwissProt	Q9NP56(Human); Q9QXQ1(Mouse)

*AREX continuously optimizes our products. Webpage content may not reflect the latest updates. For inquiries, please contact info@arexbio.com or your local distributor.

*Clone Number, Reactivity, Source/Host and Clonality can be found in the product name and Key Features section above.

DATASHEET**PDE7B Rabbit Polyclonal Antibody**

CAT. NO. APA16449

DATA

Western blot analysis of PDE7B expression in mouse kidney (A), rat brain (B) whole cell lysates. (Predicted band size: 51 kD; Observed band size: 52 kD)

STORAGE

Store at 4°C short term. For long term storage, store at -20°C, avoiding freeze/thaw cycles.

NOTE

For Research Use Only. Not for diagnostic, therapeutics, prophylactic or in vivo use.