

**DATASHEET**

**ALP Rabbit Polyclonal Antibody**

CAT. NO. APA16454

**KEY FEATURES**

Target	ALP	Source / Host	Rabbit
Reactivity	Human, Mouse, Rat	Clonality	Polyclonal
Applications	WB	Conjugation	Unconjugated
Form / Buffer	Liquid in 0.42% Potassium phosphate, 0.87% Sodium chloride, pH 7.3, 30% glycerol, and 0.01% sodium azide.		Storage at -20°C

**BACKGROUND**

May play a role in the organization of actin filament arrays within muscle cells.

**APPLICATION**

To ensure optimal assay performance, AREX recommends conducting reagent titration tailored to each testing system for optimal detection results.

WB	1:500 - 1:2000
----	----------------

\*Results are sample-specific. Please refer to your local assay conditions and test parameters for reference.

**PRODUCT OVERVIEW**

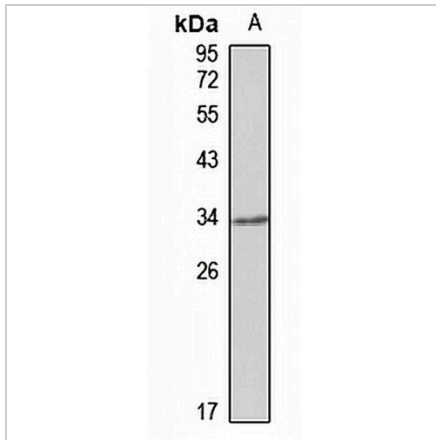
Description	Rabbit polyclonal antibody to ALP
Specificity	Recognizes endogenous levels of ALP protein
Antibody Type	Primary antibody
Immunogen	Recombinant fusion protein of human ALP. The exact sequence is proprietary.
Purification	The antibody was purified by immunogen affinity chromatography.
Molecular Weight	Predicted: 20; Observed: 34 kD
Form/Buffer	Liquid in 0.42% Potassium phosphate, 0.87% Sodium chloride, pH 7.3, 30% glycerol, and 0.01% sodium azide.
Alternative Names	ALP; PDZ and LIM domain protein 3; Actinin-associated LIM protein; Alpha-actinin-2-associated LIM protein
Gene Symbol	PDLIM3
Entrez Gene	27295(Human); 53318(Mouse); 114108(Rat)
SwissProt	Q53GG5(Human); O70209(Mouse); Q66HS7(Rat)

\*AREX continuously optimizes our products. Webpage content may not reflect the latest updates. For inquiries, please contact [info@arexbio.com](mailto:info@arexbio.com) or your local distributor.

\*Clone Number, Reactivity, Source/Host and Clonality can be found in the product name and Key Features section above.

**DATASHEET****ALP Rabbit Polyclonal Antibody**

CAT. NO. APA16454

**DATA**

Western blot analysis of ALP expression in mouse lung (A) whole cell lysates. (Predicted band size: 20; 34; 39 kD; Observed band size: 34 kD)

**STORAGE**

Store at 4°C short term. For long term storage, store at -20°C, avoiding freeze/thaw cycles.

**NOTE**

For Research Use Only. Not for diagnostic, therapeutics, prophylactic or in vivo use.