

DATASHEET

PDP2 Rabbit Polyclonal Antibody

CAT. NO. APA16455

KEY FEATURES

Target	PDP2	Source / Host	Rabbit
Reactivity	Human, Mouse, Rat	Clonality	Polyclonal
Applications	WB	Conjugation	Unconjugated
Form / Buffer	Liquid in 0.42% Potassium phosphate, 0.87% Sodium chloride, pH 7.3, 30% glycerol, and 0.01% sodium azide.		Storage at -20°C

BACKGROUND

Mitochondrial enzyme that catalyzes the dephosphorylation and concomitant reactivation of the alpha subunit of the E1 component of the pyruvate dehydrogenase complex (PDC), thereby stimulating the conversion of pyruvate into acetyl-CoA . Acts as a crucial regulator of T cell metabolism and function, with a particular focus on T-helper Th17 .

APPLICATION

To ensure optimal assay performance, AREX recommends conducting reagent titration tailored to each testing system for optimal detection results.

WB	1:500 - 1:1000
----	----------------

*Results are sample-specific. Please refer to your local assay conditions and test parameters for reference.

PRODUCT OVERVIEW

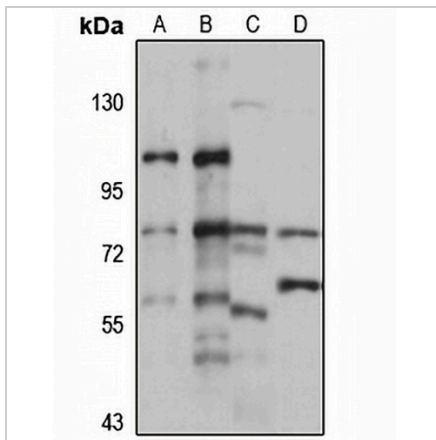
Description	Rabbit polyclonal antibody to PDP2
Specificity	Recognizes endogenous levels of PDP2 protein
Antibody Type	Primary antibody
Immunogen	Recombinant fusion protein of human PDP2. The exact sequence is proprietary.
Purification	The antibody was purified by immunogen affinity chromatography.
Molecular Weight	Predicted: 59 kD; Observed: 57 kD
Form/Buffer	Liquid in 0.42% Potassium phosphate, 0.87% Sodium chloride, pH 7.3, 30% glycerol, and 0.01% sodium azide.
Alternative Names	KIAA1348; [Pyruvate dehydrogenase [acetyl-transferring]]-phosphatase 2 mitochondrial; PDP 2; Pyruvate dehydrogenase phosphatase catalytic subunit 2; PDPC 2
Gene Symbol	PDP2
Entrez Gene	57546(Human); 246311(Rat)
SwissProt	Q9P2J9(Human); O88484(Rat)

*AREX continuously optimizes our products. Webpage content may not reflect the latest updates. For inquiries, please contact info@arexbio.com or your local distributor.

*Clone Number, Reactivity, Source/Host and Clonality can be found in the product name and Key Features section above.

DATASHEET**PDP2 Rabbit Polyclonal Antibody**

CAT. NO. APA16455

DATA

Western blot analysis of PDP2 expression in Jurkat (A), HeLa (B), mouse kidney (C), rat liver (D) whole cell lysates. (Predicted band size: 59 kD; Observed band size: 57 kD)

STORAGE

Store at 4°C short term. For long term storage, store at -20°C, avoiding freeze/thaw cycles.

NOTE

For Research Use Only. Not for diagnostic, therapeutics, prophylactic or in vivo use.