

**DATASHEET**

**Podoplanin Rabbit Polyclonal Antibody**

CAT. NO. APA16456

**KEY FEATURES**

Target	Podoplanin	Source / Host	Rabbit
Reactivity	Human, Mouse, Rat	Clonality	Polyclonal
Applications	WB, IHC	Conjugation	Unconjugated
Form / Buffer	Liquid in 0.42% Potassium phosphate, 0.87% Sodium chloride, pH 7.3, 30% glycerol, and 0.01% sodium azide.		Storage at-20°C

**BACKGROUND**

Mediates effects on cell migration and adhesion through its different partners. During development plays a role in blood and lymphatic vessels separation by binding CLEC1B, triggering CLEC1B activation in platelets and leading to platelet activation and/or aggregation . Interaction with CD9, on the contrary, attenuates platelet aggregation induced by PDPN . Through MSN or EZR interaction promotes epithelial-mesenchymal transition (EMT) leading to ERZ phosphorylation and triggering RHOA activation leading to cell migration increase and invasiveness . Interaction with CD44 promotes directional cell migration in epithelial and tumor cells .

**APPLICATION**

To ensure optimal assay performance, AREX recommends conducting reagent titration tailored to each testing system for optimal detection results.

WB	1:500 - 1:2000
IHC	1:50 - 1:200

\*Results are sample-specific. Please refer to your local assay conditions and test parameters for reference.

**PRODUCT OVERVIEW**

Description	Rabbit polyclonal antibody to Podoplanin
Specificity	Recognizes endogenous levels of Podoplanin protein
Antibody Type	Primary antibody
Immunogen	Recombinant fusion protein of human Podoplanin. The exact sequence is proprietary.
Purification	The antibody was purified by immunogen affinity chromatography.
Molecular Weight	Predicted: 12; Observed: 36 kD
Form/Buffer	Liquid in 0.42% Potassium phosphate, 0.87% Sodium chloride, pH 7.3, 30% glycerol, and 0.01% sodium azide.
Alternative Names	GP36; Podoplanin; Aggrus; Glycoprotein 36; Gp36; PA.2.26 antigen; T1-alpha; T1A
Gene Symbol	PDPN
Entrez Gene	10630(Human); 14726(Mouse); 54320(Rat)
SwissProt	Q86YL7(Human); Q62011(Mouse); Q64294(Rat)

\*AREX continuously optimizes our products. Webpage content may not reflect the latest updates. For inquiries, please contact [info@arexbio.com](mailto:info@arexbio.com) or your local distributor.

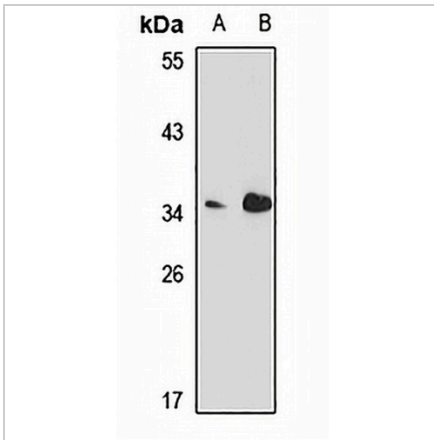
\*Clone Number, Reactivity, Source/Host and Clonality can be found in the product name and Key Features section above.

**DATASHEET**

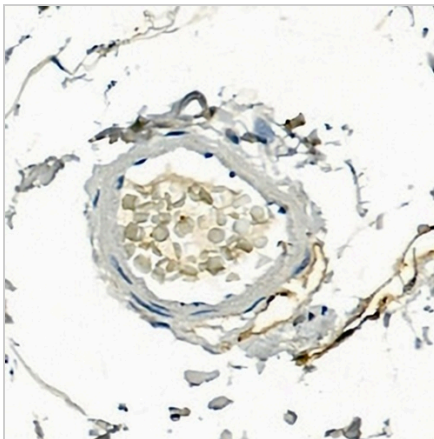
**Podoplanin Rabbit Polyclonal Antibody**

CAT. NO. APA16456

**DATA**



Western blot analysis of Podoplanin expression in mouse brain (A), rat kidney (B) whole cell lysates. (Predicted band size: 12; 16; 18; 24 kD; Observed band size: 36 kD)



Immunohistochemical analysis of Podoplanin staining in human colon formalin fixed paraffin embedded tissue section. The section was pre-treated using heat mediated antigen retrieval with sodium citrate buffer (pH 6.0). The section was then incubated with the antibody at room temperature and detected using an HRP conjugated compact polymer system. DAB was used as the chromogen. The section was then counterstained with haematoxylin and mounted with DPX.

**STORAGE**

Store at 4°C short term. For long term storage, store at -20°C, avoiding freeze/thaw cycles.

**NOTE**

For Research Use Only. Not for diagnostic, therapeutics, prophylactic or in vivo use.