

**DATASHEET**

**PECR Rabbit Polyclonal Antibody**

CAT. NO. APA16461

**KEY FEATURES**

Target	PECR	Source / Host	Rabbit
Reactivity	Human, Mouse, Rat	Clonality	Polyclonal
Applications	WB, IHC	Conjugation	Unconjugated
Form / Buffer	Liquid in 0.42% Potassium phosphate, 0.87% Sodium chloride, pH 7.3, 30% glycerol, and 0.01% sodium azide.		Storage at -20°C

**BACKGROUND**

Participates in chain elongation of fatty acids. Catalyzes the reduction of trans-2-enoyl-CoAs of varying chain lengths from 6:1 to 16:1, having maximum activity with 10:1 CoA. Has no 2,4-dienoyl-CoA reductase activity.

**APPLICATION**

To ensure optimal assay performance, AREX recommends conducting reagent titration tailored to each testing system for optimal detection results.

WB	1:500 - 1:2000
IHC	1:50 - 1:200

\*Results are sample-specific. Please refer to your local assay conditions and test parameters for reference.

**PRODUCT OVERVIEW**

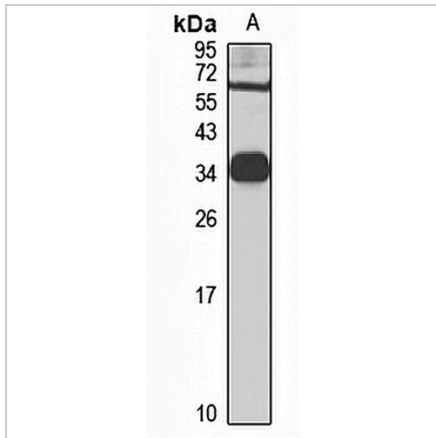
Description	Rabbit polyclonal antibody to PECR
Specificity	Recognizes endogenous levels of PECR protein
Antibody Type	Primary antibody
Immunogen	Recombinant fusion protein of human PECR. The exact sequence is proprietary.
Purification	The antibody was purified by immunogen affinity chromatography.
Molecular Weight	Predicted: 16; Observed: 33 kD
Form/Buffer	Liquid in 0.42% Potassium phosphate, 0.87% Sodium chloride, pH 7.3, 30% glycerol, and 0.01% sodium azide.
Alternative Names	Peroxisomal trans-2-enoyl-CoA reductase; TERP; 2 4-dienoyl-CoA reductase-related protein; DCR-RP; HPDHase; pVI-ARL
Gene Symbol	PECR
Entrez Gene	55825(Human); 111175(Mouse); 113956(Rat)
SwissProt	Q9BY49(Human); Q99MZ7(Mouse); Q9WVK3(Rat)

\*AREX continuously optimizes our products. Webpage content may not reflect the latest updates. For inquiries, please contact [info@arexbio.com](mailto:info@arexbio.com) or your local distributor.

\*Clone Number, Reactivity, Source/Host and Clonality can be found in the product name and Key Features section above.

**DATASHEET****PECR Rabbit Polyclonal Antibody**

CAT. NO. APA16461

**DATA**

Western blot analysis of PEQR expression in mouse kidney (A) whole cell lysates.  
(Predicted band size: 16; 32 kD; Observed band size: 33 kD)

**STORAGE**

Store at 4°C short term. For long term storage, store at -20°C, avoiding freeze/thaw cycles.

**NOTE**

For Research Use Only. Not for diagnostic, therapeutics, prophylactic or in vivo use.