

**DATASHEET**

**Pellino-1 Rabbit Polyclonal Antibody**

CAT. NO. APA16462

**KEY FEATURES**

Target	Pellino-1	Source / Host	Rabbit
Reactivity	Rat	Clonality	Polyclonal
Applications	WB	Conjugation	Unconjugated
Form / Buffer	Liquid in 0.42% Potassium phosphate, 0.87% Sodium chloride, pH 7.3, 30% glycerol, and 0.01% sodium azide.		Storage at-20°C

**BACKGROUND**

E3 ubiquitin ligase catalyzing the covalent attachment of ubiquitin moieties onto substrate proteins . Involved in the TLR and IL-1 signaling pathways via interaction with the complex containing IRAK kinases and TRAF6 . Acts as a positive regulator of inflammatory response in microglia through activation of NF-kappa-B and MAP kinase . Mediates 'Lys-63'-linked polyubiquitination of IRAK1 allowing subsequent NF-kappa-B activation . Conjugates 'Lys-63'-linked ubiquitin chains to the adapter protein ASC/PYCARD, which in turn is crucial for NLRP3 inflammasome activation . Mediates 'Lys-48'-linked polyubiquitination of RIPK3 leading to its subsequent proteasome-dependent degradation; preferentially recognizes and mediates the degradation of the 'Thr-182' phosphorylated form of RIPK3 .

**APPLICATION**

To ensure optimal assay performance, AREX recommends conducting reagent titration tailored to each testing system for optimal detection results.

WB	1:500 - 1:2000
----	----------------

\*Results are sample-specific. Please refer to your local assay conditions and test parameters for reference.

**PRODUCT OVERVIEW**

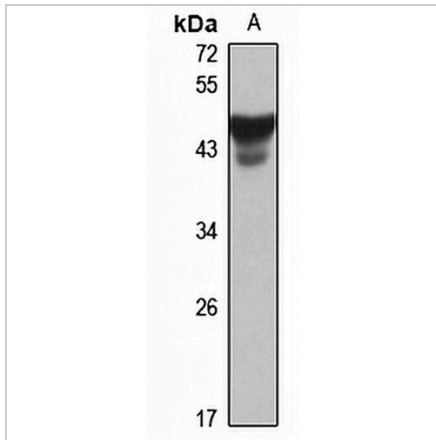
Description	Rabbit polyclonal antibody to Pellino-1
Specificity	Recognizes endogenous levels of Pellino-1 protein
Antibody Type	Primary antibody
Immunogen	Recombinant fusion protein of human Pellino-1. The exact sequence is proprietary.
Purification	The antibody was purified by immunogen affinity chromatography.
Molecular Weight	Predicted: 46 kD; Observed: 46 kD
Form/Buffer	Liquid in 0.42% Potassium phosphate, 0.87% Sodium chloride, pH 7.3, 30% glycerol, and 0.01% sodium azide.
Alternative Names	PRISM; E3 ubiquitin-protein ligase pellino homolog 1; Pellino-1; Pellino-related intracellular-signaling molecule
Gene Symbol	PELI1
Entrez Gene	57162(Human)
SwissProt	Q96FA3(Human)

\*AREX continuously optimizes our products. Webpage content may not reflect the latest updates. For inquiries, please contact [info@arexbio.com](mailto:info@arexbio.com) or your local distributor.

\*Clone Number, Reactivity, Source/Host and Clonality can be found in the product name and Key Features section above.

**DATASHEET****Pellino-1 Rabbit Polyclonal Antibody**

CAT. NO. APA16462

**DATA**

Western blot analysis of Pellino-1 expression in rat brain (A) whole cell lysates. (Predicted band size: 46 kD; Observed band size: 46 kD)

**STORAGE**

Store at 4°C short term. For long term storage, store at -20°C, avoiding freeze/thaw cycles.

**NOTE**

For Research Use Only. Not for diagnostic, therapeutics, prophylactic or in vivo use.