

DATASHEET

Twinkle Rabbit Polyclonal Antibody

CAT. NO. APA16464

KEY FEATURES

Target	Twinkle	Source / Host	Rabbit
Reactivity	Human, Mouse	Clonality	Polyclonal
Applications	WB	Conjugation	Unconjugated
Form / Buffer	Liquid in 0.42% Potassium phosphate, 0.87% Sodium chloride, pH 7.3, 30% glycerol, and 0.01% sodium azide.		Storage at-20°C

BACKGROUND

Mitochondrial helicase involved in mtDNA replication and repair . Might have a role in mtDNA repair . Has DNA strand separation activity needed to form a processive replication fork for leading strand synthesis which is catalyzed by the formation of a replisome complex with POLG and mtSDB . Preferentially unwinds DNA substrates with pre-existing 5'-and 3'- single-stranded tails but is also active on a 5'- flap substrate . Can dissociate the invading strand of immobile or mobile D-loop DNA structures irrespective of the single strand polarity of the third strand . In addition to its DNA strand separation activity, also has DNA strand annealing, DNA strand-exchange and DNA branch migration activities .

APPLICATION

To ensure optimal assay performance, AREX recommends conducting reagent titration tailored to each testing system for optimal detection results.

WB	1:500 - 1:1000
----	----------------

*Results are sample-specific. Please refer to your local assay conditions and test parameters for reference.

PRODUCT OVERVIEW

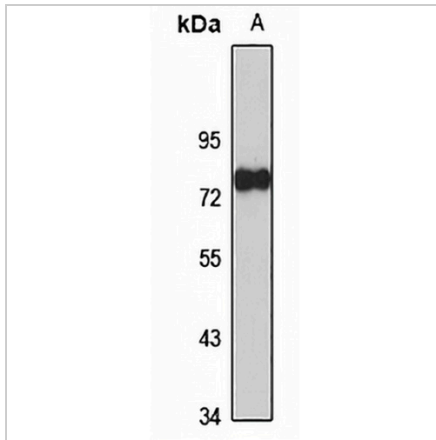
Description	Rabbit polyclonal antibody to Twinkle
Specificity	Recognizes endogenous levels of Twinkle protein
Antibody Type	Primary antibody
Immunogen	Recombinant fusion protein of human Twinkle. The exact sequence is proprietary.
Purification	The antibody was purified by immunogen affinity chromatography.
Molecular Weight	Predicted: 60; Observed: 77 kD
Form/Buffer	Liquid in 0.42% Potassium phosphate, 0.87% Sodium chloride, pH 7.3, 30% glycerol, and 0.01% sodium azide.
Alternative Names	C10orf2; Twinkle protein mitochondrial; Progressive external ophthalmoplegia 1 protein; T7 gp4-like protein with intramitochondrial nucleoid localization; T7-like mitochondrial DNA helicase
Gene Symbol	PEO1
Entrez Gene	56652(Human)
SwissProt	Q96RR1(Human)

*AREX continuously optimizes our products. Webpage content may not reflect the latest updates. For inquiries, please contact info@arexbio.com or your local distributor.

*Clone Number, Reactivity, Source/Host and Clonality can be found in the product name and Key Features section above.

DATASHEET**Twinkle Rabbit Polyclonal Antibody**

CAT. NO. APA16464

DATA

Western blot analysis of Twinkle expression in MCF7 (A) whole cell lysates. (Predicted band size: 60; 66; 77 kD; Observed band size: 77 kD)

STORAGE

Store at 4°C short term. For long term storage, store at -20°C, avoiding freeze/thaw cycles.

NOTE

For Research Use Only. Not for diagnostic, therapeutics, prophylactic or in vivo use.