

DATASHEET

Perp Rabbit Polyclonal Antibody

CAT. NO. APA16466

KEY FEATURES

Target	Perp	Source / Host	Rabbit
Reactivity	Human, Mouse, Rat	Clonality	Polyclonal
Applications	WB	Conjugation	Unconjugated
Form / Buffer	Liquid in 0.42% Potassium phosphate, 0.87% Sodium chloride, pH 7.3, 30% glycerol, and 0.01% sodium azide.		Storage at -20°C

BACKGROUND

Component of intercellular desmosome junctions . Plays a role in stratified epithelial integrity and cell-cell adhesion by promoting desmosome assembly . Thereby plays a role in barrier function of the skin against infection . Plays a role in mammary epithelial tissue homeostasis and remodeling during and after pregnancy, potentially via its involvement in desmosome cell-cell junctions . Required for tooth enamel development via facilitating desmosome-mediated ameloblast adhesion to the stratum intermedium during the transitional stage of amelogenesis . May also play a role in downstream transcriptional regulation of other genes involved in amelogenesis such as AMBN, ENAM, MMP20 and KLK4 . Plays a role as an effector in the TP53-dependent apoptotic pathway .

APPLICATION

To ensure optimal assay performance, AREX recommends conducting reagent titration tailored to each testing system for optimal detection results.

WB	1:500 - 1:2000
----	----------------

*Results are sample-specific. Please refer to your local assay conditions and test parameters for reference.

PRODUCT OVERVIEW

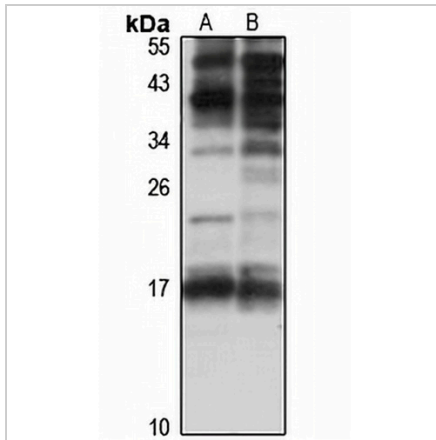
Description	Rabbit polyclonal antibody to Perp
Specificity	Recognizes endogenous levels of Perp protein
Antibody Type	Primary antibody
Immunogen	KLH-conjugated synthetic peptide of human Perp. The exact sequence is proprietary.
Purification	The antibody was purified by immunogen affinity chromatography.
Molecular Weight	Predicted: 21 kD; Observed: 17 kD
Form/Buffer	Liquid in 0.42% Potassium phosphate, 0.87% Sodium chloride, pH 7.3, 30% glycerol, and 0.01% sodium azide.
Alternative Names	KCP1; KRTCAP1; PIGPC1; THW; p53 apoptosis effector related to PMP-22; Keratinocyte-associated protein 1; KCP-1; P53-induced protein PIGPC1; Transmembrane protein THW
Gene Symbol	PERP
Entrez Gene	64065(Human); 64058(Mouse)
SwissProt	Q96FX8(Human); Q9JK95(Mouse)

*AREX continuously optimizes our products. Webpage content may not reflect the latest updates. For inquiries, please contact info@arexbio.com or your local distributor.

*Clone Number, Reactivity, Source/Host and Clonality can be found in the product name and Key Features section above.

DATASHEET**Perp Rabbit Polyclonal Antibody**

CAT. NO. APA16466

DATA

Western blot analysis of Perp expression in Jurkat (A), mouse thymus (B) whole cell lysates. (Predicted band size: 21 kD; Observed band size: 17 kD)

STORAGE

Store at 4°C short term. For long term storage, store at -20°C, avoiding freeze/thaw cycles.

NOTE

For Research Use Only. Not for diagnostic, therapeutics, prophylactic or in vivo use.