

DATASHEET

Pescadillo Rabbit Polyclonal Antibody

CAT. NO. APA16467

KEY FEATURES

Target	Pescadillo	Source / Host	Rabbit
Reactivity	Human, Mouse, Rat	Clonality	Polyclonal
Applications	WB	Conjugation	Unconjugated
Form / Buffer	Liquid in 0.42% Potassium phosphate, 0.87% Sodium chloride, pH 7.3, 30% glycerol, and 0.01% sodium azide.		Storage at -20°C

BACKGROUND

Component of the PeBoW complex, which is required for maturation of 28S and 5.8S ribosomal RNAs and formation of the 60S ribosome.

APPLICATION

To ensure optimal assay performance, AREX recommends conducting reagent titration tailored to each testing system for optimal detection results.

WB	1:500 - 1:2000
----	----------------

*Results are sample-specific. Please refer to your local assay conditions and test parameters for reference.

PRODUCT OVERVIEW

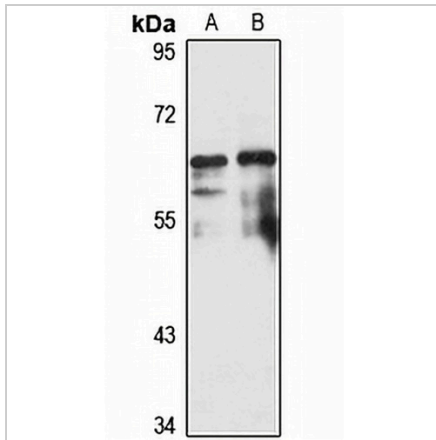
Description	Rabbit polyclonal antibody to Pescadillo
Specificity	Recognizes endogenous levels of Pescadillo protein
Antibody Type	Primary antibody
Immunogen	Recombinant fusion protein of human Pescadillo. The exact sequence is proprietary.
Purification	The antibody was purified by immunogen affinity chromatography.
Molecular Weight	Predicted: 67; Observed: 68 kD
Form/Buffer	Liquid in 0.42% Potassium phosphate, 0.87% Sodium chloride, pH 7.3, 30% glycerol, and 0.01% sodium azide.
Alternative Names	Pescadillo homolog
Gene Symbol	PES1
Entrez Gene	23481(Human); 64934(Mouse); 289740(Rat)
SwissProt	O00541(Human); Q9EQ61(Mouse); Q3B8N8(Rat)

*AREX continuously optimizes our products. Webpage content may not reflect the latest updates. For inquiries, please contact info@arexbio.com or your local distributor.

*Clone Number, Reactivity, Source/Host and Clonality can be found in the product name and Key Features section above.

DATASHEET**Pescadillo Rabbit Polyclonal Antibody**

CAT. NO. APA16467

DATA

Western blot analysis of Pescadillo expression in HepG2 (A), Jurkat (B) whole cell lysates.
(Predicted band size: 67; 68 kD; Observed band size: 68 kD)

STORAGE

Store at 4°C short term. For long term storage, store at -20°C, avoiding freeze/thaw cycles.

NOTE

For Research Use Only. Not for diagnostic, therapeutics, prophylactic or in vivo use.