

DATASHEET

Pepsin A3 Rabbit Polyclonal Antibody

CAT. NO. APA16474

KEY FEATURES

Target	Pepsin A3	Source / Host	Rabbit
Reactivity	Human, Mouse, Rat	Clonality	Polyclonal
Applications	WB	Conjugation	Unconjugated
Form / Buffer	Liquid in 0.42% Potassium phosphate, 0.87% Sodium chloride, pH 7.3, 30% glycerol, and 0.01% sodium azide.	Storage	at-20°C

BACKGROUND

Shows particularly broad specificity; although bonds involving phenylalanine and leucine are preferred, many others are also cleaved to some extent.

APPLICATION

To ensure optimal assay performance, AREX recommends conducting reagent titration tailored to each testing system for optimal detection results.

WB	1:500 - 1:2000
----	----------------

*Results are sample-specific. Please refer to your local assay conditions and test parameters for reference.

PRODUCT OVERVIEW

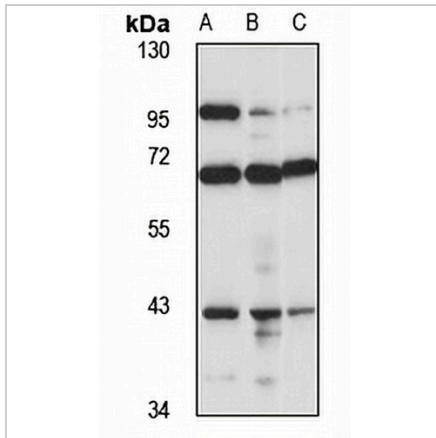
Description	Rabbit polyclonal antibody to Pepsin A3
Specificity	Recognizes endogenous levels of Pepsin A3 protein
Antibody Type	Primary antibody
Immunogen	KLH-conjugated synthetic peptide of human Pepsin A3. The exact sequence is proprietary.
Purification	The antibody was purified by immunogen affinity chromatography.
Molecular Weight	Predicted: 41 kD; Observed: 42 kD
Form/Buffer	Liquid in 0.42% Potassium phosphate, 0.87% Sodium chloride, pH 7.3, 30% glycerol, and 0.01% sodium azide.
Alternative Names	Pepsin A-3; Pepsinogen-3
Gene Symbol	PGA3
Entrez Gene	101929842; 643834(Human)
SwissProt	PODJD8(Human)

*AREX continuously optimizes our products. Webpage content may not reflect the latest updates. For inquiries, please contact info@arexbio.com or your local distributor.

*Clone Number, Reactivity, Source/Host and Clonality can be found in the product name and Key Features section above.

DATASHEET**Pepsin A3 Rabbit Polyclonal Antibody**

CAT. NO. APA16474

DATA

Western blot analysis of Pepsin A3 expression in SGC7901 (A), mouse brain (B), rat brain (C) whole cell lysates. (Predicted band size: 41 kD; Observed band size: 42 kD)

STORAGE

Store at 4°C short term. For long term storage, store at -20°C, avoiding freeze/thaw cycles.

NOTE

For Research Use Only. Not for diagnostic, therapeutics, prophylactic or in vivo use.