

DATASHEET

Pepsin A5 Rabbit Polyclonal Antibody

CAT. NO. APA16475

KEY FEATURES

Target	Pepsin A5	Source / Host	Rabbit
Reactivity	Human, Mouse, Rat	Clonality	Polyclonal
Applications	WB	Conjugation	Unconjugated
Form / Buffer	Liquid in 0.42% Potassium phosphate, 0.87% Sodium chloride, pH 7.3, 30% glycerol, and 0.01% sodium azide.	Storage	at-20°C

BACKGROUND

Shows particularly broad specificity; although bonds involving phenylalanine and leucine are preferred, many others are also cleaved to some extent.

APPLICATION

To ensure optimal assay performance, AREX recommends conducting reagent titration tailored to each testing system for optimal detection results.

WB	1:500 - 1:2000
----	----------------

*Results are sample-specific. Please refer to your local assay conditions and test parameters for reference.

PRODUCT OVERVIEW

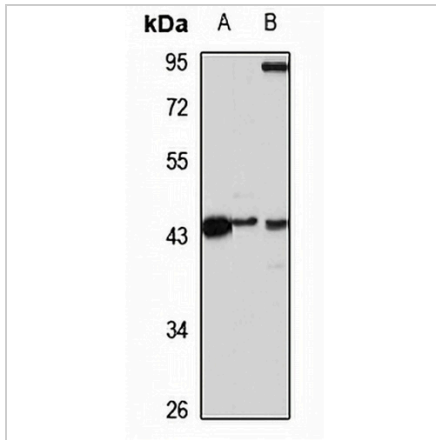
Description	Rabbit polyclonal antibody to Pepsin A5
Specificity	Recognizes endogenous levels of Pepsin A5 protein
Antibody Type	Primary antibody
Immunogen	Recombinant fusion protein of human Pepsin A5. The exact sequence is proprietary.
Purification	The antibody was purified by immunogen affinity chromatography.
Molecular Weight	Predicted: 41 kD; Observed: 42 kD
Form/Buffer	Liquid in 0.42% Potassium phosphate, 0.87% Sodium chloride, pH 7.3, 30% glycerol, and 0.01% sodium azide.
Alternative Names	Pepsin A-5; Pepsinogen-5
Gene Symbol	PGA5
Entrez Gene	5222(Human)
SwissProt	PODJD9(Human)

*AREX continuously optimizes our products. Webpage content may not reflect the latest updates. For inquiries, please contact info@arexbio.com or your local distributor.

*Clone Number, Reactivity, Source/Host and Clonality can be found in the product name and Key Features section above.

DATASHEET**Pepsin A5 Rabbit Polyclonal Antibody**

CAT. NO. APA16475

DATA

Western blot analysis of Pepsin A5 expression in HT29 (A), mouse stomach (B), rat brain (C) whole cell lysates. (Predicted band size: 41 kD; Observed band size: 42 kD)

STORAGE

Store at 4°C short term. For long term storage, store at -20°C, avoiding freeze/thaw cycles.

NOTE

For Research Use Only. Not for diagnostic, therapeutics, prophylactic or in vivo use.