

DATASHEET

PGM 2 Rabbit Polyclonal Antibody

CAT. NO. APA16479

KEY FEATURES

Target	PGM 2	Source / Host	Rabbit
Reactivity	Human, Mouse	Clonality	Polyclonal
Applications	WB	Conjugation	Unconjugated
Form / Buffer	Liquid in 0.42% Potassium phosphate, 0.87% Sodium chloride, pH 7.3, 30% glycerol, and 0.01% sodium azide.		Storage at -20°C

BACKGROUND

Catalyzes the conversion of the nucleoside breakdown products ribose-1-phosphate and deoxyribose-1-phosphate to the corresponding 5-phosphopentoses . Catalyzes the reversible isomerization of alpha-D-glucose 1-phosphate to alpha-D-glucose 6-phosphate but with a lower catalytic efficiency . The mechanism proceeds via the intermediate compound alpha-D-glucose 1,6-bisphosphate . In vitro, also has a low glucose 1,6-bisphosphate synthase activity which is most probably not physiologically relevant .

APPLICATION

To ensure optimal assay performance, AREX recommends conducting reagent titration tailored to each testing system for optimal detection results.

WB	1:500 - 1:2000
----	----------------

*Results are sample-specific. Please refer to your local assay conditions and test parameters for reference.

PRODUCT OVERVIEW

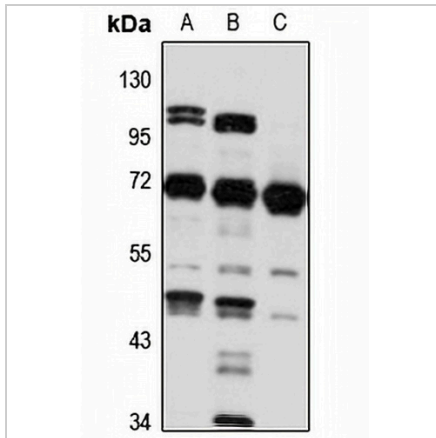
Description	Rabbit polyclonal antibody to PGM 2
Specificity	Recognizes endogenous levels of PGM 2 protein
Antibody Type	Primary antibody
Immunogen	Recombinant fusion protein of human PGM 2. The exact sequence is proprietary.
Purification	The antibody was purified by immunogen affinity chromatography.
Molecular Weight	Predicted: 32; Observed: 70 kD
Form/Buffer	Liquid in 0.42% Potassium phosphate, 0.87% Sodium chloride, pH 7.3, 30% glycerol, and 0.01% sodium azide.
Alternative Names	Phosphoglucomutase-2; PGM 2; Glucose phosphomutase 2; Phosphodeoxyribomutase; Phosphopentomutase
Gene Symbol	PGM2
Entrez Gene	55276(Human); 66681(Mouse)
SwissProt	Q96G03(Human); Q7TSV4(Mouse)

*AREX continuously optimizes our products. Webpage content may not reflect the latest updates. For inquiries, please contact info@arexbio.com or your local distributor.

*Clone Number, Reactivity, Source/Host and Clonality can be found in the product name and Key Features section above.

DATASHEET**PGM 2 Rabbit Polyclonal Antibody**

CAT. NO. APA16479

DATA

Western blot analysis of PGM 2 expression in HeLa (A), NIH3T3 (B), mouse lung (C) whole cell lysates. (Predicted band size: 32; 68 kD; Observed band size: 70 kD)

STORAGE

Store at 4°C short term. For long term storage, store at -20°C, avoiding freeze/thaw cycles.

NOTE

For Research Use Only. Not for diagnostic, therapeutics, prophylactic or in vivo use.