

DATASHEET

PHF10 Rabbit Polyclonal Antibody

CAT. NO. APA16482

KEY FEATURES

Target	PHF10	Source / Host	Rabbit
Reactivity	Human, Mouse, Rat	Clonality	Polyclonal
Applications	WB	Conjugation	Unconjugated
Form / Buffer	Liquid in 0.42% Potassium phosphate, 0.87% Sodium chloride, pH 7.3, 30% glycerol, and 0.01% sodium azide.		Storage at -20°C

BACKGROUND

Involved in transcription activity regulation by chromatin remodeling. Belongs to the neural progenitors-specific chromatin remodeling complex (npBAF complex) and is required for the proliferation of neural progenitors. During neural development a switch from a stem/progenitor to a post-mitotic chromatin remodeling mechanism occurs as neurons exit the cell cycle and become committed to their adult state. The transition from proliferating neural stem/progenitor cells to post-mitotic neurons requires a switch in subunit composition of the npBAF and nBAF complexes.

APPLICATION

To ensure optimal assay performance, AREX recommends conducting reagent titration tailored to each testing system for optimal detection results.

WB	1:500 - 1:2000
----	----------------

*Results are sample-specific. Please refer to your local assay conditions and test parameters for reference.

PRODUCT OVERVIEW

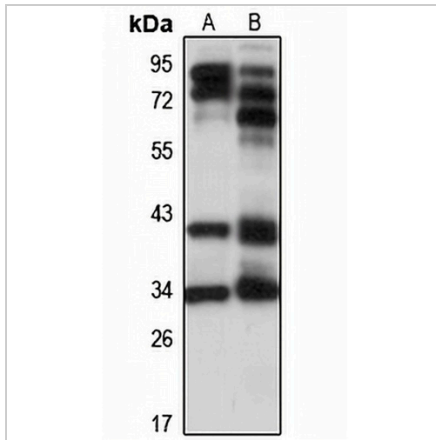
Description	Rabbit polyclonal antibody to PHF10
Specificity	Recognizes endogenous levels of PHF10 protein
Antibody Type	Primary antibody
Immunogen	Recombinant fusion protein of human PHF10. The exact sequence is proprietary.
Purification	The antibody was purified by immunogen affinity chromatography.
Molecular Weight	Predicted: 51; Observed: 39 kD
Form/Buffer	Liquid in 0.42% Potassium phosphate, 0.87% Sodium chloride, pH 7.3, 30% glycerol, and 0.01% sodium azide.
Alternative Names	BAF45A; PHD finger protein 10; BRG1-associated factor 45a; BAF45a; XAP135
Gene Symbol	PHF10
Entrez Gene	55274(Human); 72057(Mouse); 292404(Rat)
SwissProt	Q8WUB8(Human); Q9D8M7(Mouse); Q4V7A6(Rat)

*AREX continuously optimizes our products. Webpage content may not reflect the latest updates. For inquiries, please contact info@arexbio.com or your local distributor.

*Clone Number, Reactivity, Source/Host and Clonality can be found in the product name and Key Features section above.

DATASHEET**PHF10 Rabbit Polyclonal Antibody**

CAT. NO. APA16482

DATA

Western blot analysis of PHF10 expression in A431 (A), mouse spleen (B) whole cell lysates. (Predicted band size: 51; 55; 56 kD; Observed band size: 39 kD)

STORAGE

Store at 4°C short term. For long term storage, store at -20°C, avoiding freeze/thaw cycles.

NOTE

For Research Use Only. Not for diagnostic, therapeutics, prophylactic or in vivo use.