

DATASHEET

PHF13 Rabbit Polyclonal Antibody

CAT. NO. APA16484

KEY FEATURES

Target	PHF13	Source / Host	Rabbit
Reactivity	Human, Mouse, Rat	Clonality	Polyclonal
Applications	WB	Conjugation	Unconjugated
Form / Buffer	Liquid in 0.42% Potassium phosphate, 0.87% Sodium chloride, pH 7.3, 30% glycerol, and 0.01% sodium azide.		Storage at -20°C

BACKGROUND

Modulates chromatin structure and DNA damage response by regulating key determinants of chromatin compaction and DNA damage response . Binds H3K4me3-containing chromatin and promotes DNA condensation by recruiting corepressors such as TRIM28 and H3K9 methyltransferase SETDB1 . Required for normal chromosome condensation during the early stages of mitosis. Required for normal chromosome separation during mitosis . Increases both chromatin-associated levels and activity of H3K9 methyltransferases, such as SETDB1, thus enhancing H3K9 trimethylation . Essential for testicular stem-cell differentiation and sustained spermatogenesis .

APPLICATION

To ensure optimal assay performance, AREX recommends conducting reagent titration tailored to each testing system for optimal detection results.

WB	1:500 - 1:2000
----	----------------

*Results are sample-specific. Please refer to your local assay conditions and test parameters for reference.

PRODUCT OVERVIEW

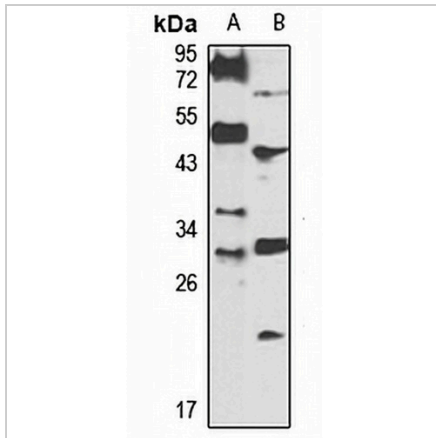
Description	Rabbit polyclonal antibody to PHF13
Specificity	Recognizes endogenous levels of PHF13 protein
Antibody Type	Primary antibody
Immunogen	Recombinant fusion protein of human PHF13. The exact sequence is proprietary.
Purification	The antibody was purified by immunogen affinity chromatography.
Molecular Weight	Predicted: 33 kD; Observed: 33 kD
Form/Buffer	Liquid in 0.42% Potassium phosphate, 0.87% Sodium chloride, pH 7.3, 30% glycerol, and 0.01% sodium azide.
Alternative Names	PHD finger protein 13; Survival time-associated PHD finger protein in ovarian cancer 1; SPOC1
Gene Symbol	PHF13
Entrez Gene	148479(Human); 230936(Mouse)
SwissProt	Q86YI8(Human); Q8K2W6(Mouse)

*AREX continuously optimizes our products. Webpage content may not reflect the latest updates. For inquiries, please contact info@arexbio.com or your local distributor.

*Clone Number, Reactivity, Source/Host and Clonality can be found in the product name and Key Features section above.

DATASHEET**PHF13 Rabbit Polyclonal Antibody**

CAT. NO. APA16484

DATA

Western blot analysis of PHF13 expression in mouse kidney (A), rat brain (B) whole cell lysates. (Predicted band size: 33 kD; Observed band size: 33 kD)

STORAGE

Store at 4°C short term. For long term storage, store at -20°C, avoiding freeze/thaw cycles.

NOTE

For Research Use Only. Not for diagnostic, therapeutics, prophylactic or in vivo use.