

DATASHEET

PHF20 Rabbit Polyclonal Antibody

CAT. NO. APA16485

KEY FEATURES

| | | | |
|---------------|---|---------------|---------------------|
| Target | PHF20 | Source / Host | Rabbit |
| Reactivity | Human, Mouse | Clonality | Polyclonal |
| Applications | WB | Conjugation | Unconjugated |
| Form / Buffer | Liquid in 0.42% Potassium phosphate, 0.87% Sodium chloride, pH 7.3, 30% glycerol, and 0.01% sodium azide. | | Storage at -20°C |

BACKGROUND

Methyllysine-binding protein, component of the MOF histone acetyltransferase protein complex. Not required for maintaining the global histone H4 'Lys-16' acetylation (H4K16ac) levels or locus specific histone acetylation, but instead works downstream in transcriptional regulation of MOF target genes. As part of the NSL complex it may be involved in acetylation of nucleosomal histone H4 on several lysine residues. Contributes to methyllysine-dependent p53/TP53 stabilization and up-regulation after DNA damage.

APPLICATION

To ensure optimal assay performance, AREX recommends conducting reagent titration tailored to each testing system for optimal detection results.

| | |
|----|----------------|
| WB | 1:500 - 1:2000 |
|----|----------------|

*Results are sample-specific. Please refer to your local assay conditions and test parameters for reference.

PRODUCT OVERVIEW

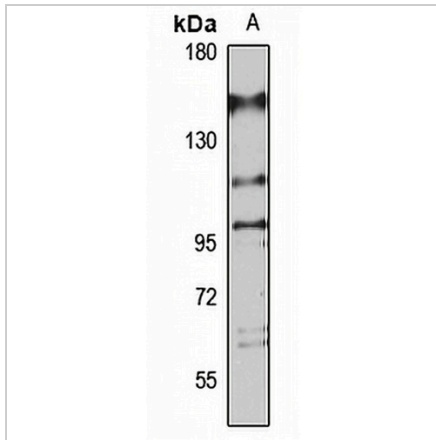
| | |
|-------------------|---|
| Description | Rabbit polyclonal antibody to PHF20 |
| Specificity | Recognizes endogenous levels of PHF20 protein |
| Antibody Type | Primary antibody |
| Immunogen | Recombinant fusion protein of human PHF20. The exact sequence is proprietary. |
| Purification | The antibody was purified by immunogen affinity chromatography. |
| Molecular Weight | Predicted: 31; Observed: 115 kD |
| Form/Buffer | Liquid in 0.42% Potassium phosphate, 0.87% Sodium chloride, pH 7.3, 30% glycerol, and 0.01% sodium azide. |
| Alternative Names | C20orf104; GLEA2; HCA58; NZF; TZP; PHD finger protein 20; Glioma-expressed antigen 2; Hepatocellular carcinoma-associated antigen 58; Novel zinc finger protein; Transcription factor TZP |
| Gene Symbol | PHF20 |
| Entrez Gene | 51230(Human); 228829(Mouse) |
| SwissProt | Q9BVI0(Human); Q8BLG0(Mouse) |

*AREX continuously optimizes our products. Webpage content may not reflect the latest updates. For inquiries, please contact info@arexbio.com or your local distributor.

*Clone Number, Reactivity, Source/Host and Clonality can be found in the product name and Key Features section above.

DATASHEET**PHF20 Rabbit Polyclonal Antibody**

CAT. NO. APA16485

DATA

Western blot analysis of PHF20 expression in Jurkat (A) whole cell lysates. (Predicted band size: 31; 115 kD; Observed band size: 115 kD)

STORAGE

Store at 4°C short term. For long term storage, store at -20°C, avoiding freeze/thaw cycles.

NOTE

For Research Use Only. Not for diagnostic, therapeutics, prophylactic or in vivo use.