

DATASHEET

PI 4-kinase beta Rabbit Polyclonal Antibody

CAT. NO. APA16491

KEY FEATURES

Target	PI 4-kinase beta	Source / Host	Rabbit
Reactivity	Human, Mouse, Rat	Clonality	Polyclonal
Applications	WB, IF/ICC	Conjugation	Unconjugated
Form / Buffer	Liquid in 0.42% Potassium phosphate, 0.87% Sodium chloride, pH 7.3, 30% glycerol, and 0.01% sodium azide.		Storage at -20°C

BACKGROUND

Phosphorylates phosphatidylinositol (PI) in the first committed step in the production of the second messenger inositol-1,4,5-trisphosphate (PIP). May regulate Golgi disintegration/reorganization during mitosis, possibly via its phosphorylation. Involved in Golgi-to-plasma membrane trafficking in the first committed step in the production of the second messenger inositol-1,4,5-trisphosphate (PIP). May regulate Golgi disintegration/reorganization during mitosis, possibly via its phosphorylation. Involved in Golgi-to-plasma membrane trafficking . May play an important role in the inner ear development.

APPLICATION

To ensure optimal assay performance, AREX recommends conducting reagent titration tailored to each testing system for optimal detection results.

WB	1:500 - 1:2000
IF/ICC	1:50 - 1:200

*Results are sample-specific. Please refer to your local assay conditions and test parameters for reference.

PRODUCT OVERVIEW

Description	Rabbit polyclonal antibody to PI 4-kinase beta
Specificity	Recognizes endogenous levels of PI 4-kinase beta protein
Antibody Type	Primary antibody
Immunogen	Recombinant fusion protein of human PI 4-kinase beta. The exact sequence is proprietary.
Purification	The antibody was purified by immunogen affinity chromatography.
Molecular Weight	Predicted: 54; Observed: 91 kD
Form/Buffer	Liquid in 0.42% Potassium phosphate, 0.87% Sodium chloride, pH 7.3, 30% glycerol, and 0.01% sodium azide.
Alternative Names	PIK4CB; Phosphatidylinositol 4-kinase beta; PI4K-beta; PI4Kbeta; PtdIns 4-kinase beta; NPIK; PI4K92
Gene Symbol	PI4KB
Entrez Gene	5298(Human); 107650(Mouse); 81747(Rat)
SwissProt	Q9UBF8(Human); Q8BKC8(Mouse); O08561(Rat)

*AREX continuously optimizes our products. Webpage content may not reflect the latest updates. For inquiries, please contact info@arexbio.com or your local distributor.

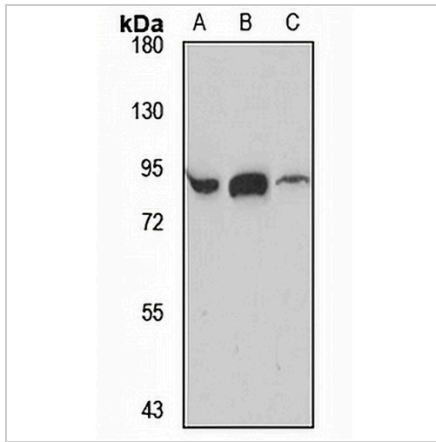
*Clone Number, Reactivity, Source/Host and Clonality can be found in the product name and Key Features section above.

DATASHEET

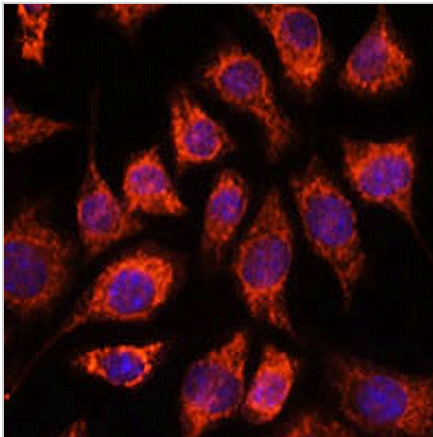
PI 4-kinase beta Rabbit Polyclonal Antibody

CAT. NO. APA16491

DATA



Western blot analysis of PI 4-kinase beta expression in mouse liver (A), rat brain (B), rat lung (C) whole cell lysates. (Predicted band size: 54; 89; 91 kD; Observed band size: 91 kD)



Immunofluorescent analysis of PI 4-kinase beta staining in L929 cells. Formalin-fixed cells were permeabilized with 0.1% Triton X-100 in TBS for 5-10 minutes and blocked with 3% BSA-PBS for 30 minutes at room temperature. Cells were probed with the primary antibody in 3% BSA-PBS and incubated overnight at 4 °C in a humidified chamber. Cells were washed with PBST and incubated with a AREX® Fluor 594-conjugated secondary antibody (red) in PBS at room temperature in the dark. DAPI was used to stain the cell nuclei (blue).

STORAGE

Store at 4°C short term. For long term storage, store at -20°C, avoiding freeze/thaw cycles.

NOTE

For Research Use Only. Not for diagnostic, therapeutics, prophylactic or in vivo use.