

DATASHEET

PID1 Rabbit Polyclonal Antibody

CAT. NO. APA16493

KEY FEATURES

Target	PID1	Source / Host	Rabbit
Reactivity	Human, Mouse, Rat	Clonality	Polyclonal
Applications	WB	Conjugation	Unconjugated
Form / Buffer	Liquid in 0.42% Potassium phosphate, 0.87% Sodium chloride, pH 7.3, 30% glycerol, and 0.01% sodium azide.		Storage at -20°C

BACKGROUND

Increases proliferation of preadipocytes without affecting adipocytic differentiation.

APPLICATION

To ensure optimal assay performance, AREX recommends conducting reagent titration tailored to each testing system for optimal detection results.

WB	1:500 - 1:2000
----	----------------

*Results are sample-specific. Please refer to your local assay conditions and test parameters for reference.

PRODUCT OVERVIEW

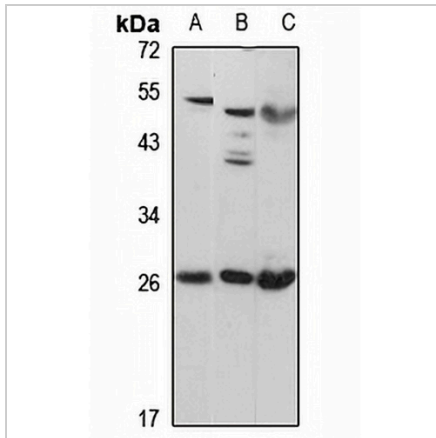
Description	Rabbit polyclonal antibody to PID1
Specificity	Recognizes endogenous levels of PID1 protein
Antibody Type	Primary antibody
Immunogen	Recombinant fusion protein of human PID1. The exact sequence is proprietary.
Purification	The antibody was purified by immunogen affinity chromatography.
Molecular Weight	Predicted: 19; Observed: 27 kD
Form/Buffer	Liquid in 0.42% Potassium phosphate, 0.87% Sodium chloride, pH 7.3, 30% glycerol, and 0.01% sodium azide.
Alternative Names	NYGGF4; PCL11; PTB-containing cubilin and LRP1-interacting protein; P-CL11; Phosphotyrosine interaction domain-containing protein 1; Protein NYGGF4
Gene Symbol	PID1
Entrez Gene	55022(Human); 98496(Mouse)
SwissProt	Q7Z2X4(Human); Q3UBG2(Mouse)

*AREX continuously optimizes our products. Webpage content may not reflect the latest updates. For inquiries, please contact info@arexbio.com or your local distributor.

*Clone Number, Reactivity, Source/Host and Clonality can be found in the product name and Key Features section above.

DATASHEET**PID1 Rabbit Polyclonal Antibody**

CAT. NO. APA16493

DATA

Western blot analysis of PID1 expression in U87MG (A), mouse kidney (B), rat brain (C) whole cell lysates. (Predicted band size: 19; 24; 28 kD; Observed band size: 27 kD)

STORAGE

Store at 4°C short term. For long term storage, store at -20°C, avoiding freeze/thaw cycles.

NOTE

For Research Use Only. Not for diagnostic, therapeutics, prophylactic or in vivo use.