

DATASHEET

PIG-M Rabbit Polyclonal Antibody

CAT. NO. APA16494

KEY FEATURES

Target	PIG-M	Source / Host	Rabbit
Reactivity	Human, Mouse, Rat	Clonality	Polyclonal
Applications	WB, IHC, IF/ICC	Conjugation	Unconjugated
Form / Buffer	Liquid in 0.42% Potassium phosphate, 0.87% Sodium chloride, pH 7.3, 30% glycerol, and 0.01% sodium azide.		Storage at -20°C

BACKGROUND

Catalytic subunit of the glycosylphosphatidylinositol-mannosyltransferase I complex which catalyzes the transfer of the first mannose, via an alpha-1,4 bond from a dolichol-phosphate-mannose (Dol-P-Man) to a 2-acyl-6-alpha-D-glucosaminyl-1-(1-radyl,2-acyl-sn-glycero-3-phospho)-1D-myo-inositol (glucosaminyl acyl phosphatidylinositol, GlcN-(acyl)PI) intermediate to generate 2-acyl-6-(alpha-D-mannosyl-(1->4)-alpha-D-glucosaminyl)-1-(1-radyl,2-acyl-sn-glycero-3-phospho)-1D-myo-inositol (also termed H2) and participates in the sixth step of the glycosylphosphatidylinositol-anchor biosynthesis.

APPLICATION

To ensure optimal assay performance, AREX recommends conducting reagent titration tailored to each testing system for optimal detection results.

WB	1:500 - 1:2000
IHC	1:50 - 1:200
IF/ICC	1:50 - 1:200

*Results are sample-specific. Please refer to your local assay conditions and test parameters for reference.

PRODUCT OVERVIEW

Description	Rabbit polyclonal antibody to PIG-M
Specificity	Recognizes endogenous levels of PIG-M protein
Antibody Type	Primary antibody
Immunogen	Recombinant fusion protein of human PIG-M. The exact sequence is proprietary.
Purification	The antibody was purified by immunogen affinity chromatography.
Molecular Weight	Predicted: 49 kD; Observed: 49 kD
Form/Buffer	Liquid in 0.42% Potassium phosphate, 0.87% Sodium chloride, pH 7.3, 30% glycerol, and 0.01% sodium azide.
Alternative Names	GPI mannosyltransferase 1; GPI mannosyltransferase I; GPI-MT-I; Phosphatidylinositol-glycan biosynthesis class M protein; PIG-M
Gene Symbol	PIGM
Entrez Gene	93183(Human); 67556(Mouse); 79112(Rat)
SwissProt	Q9H3S5(Human); Q8C2R7(Mouse); Q9EQY6(Rat)

*AREX continuously optimizes our products. Webpage content may not reflect the latest updates. For inquiries, please contact info@arexbio.com or your local distributor.

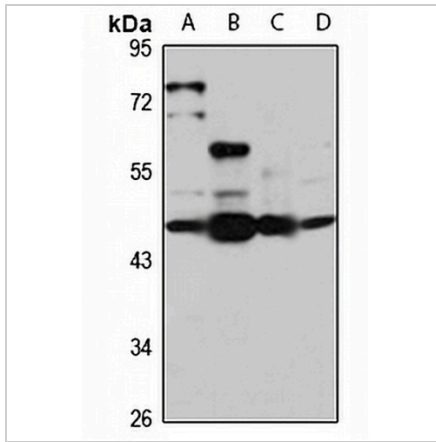
*Clone Number, Reactivity, Source/Host and Clonality can be found in the product name and Key Features section above.

DATASHEET

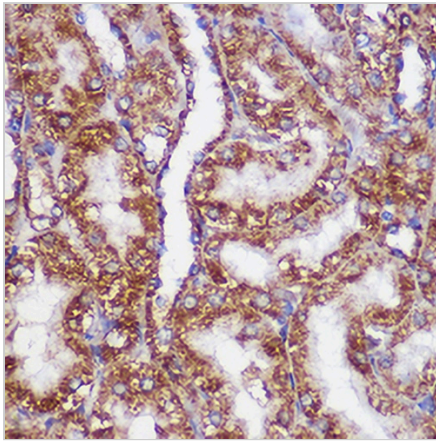
PIG-M Rabbit Polyclonal Antibody

CAT. NO. APA16494

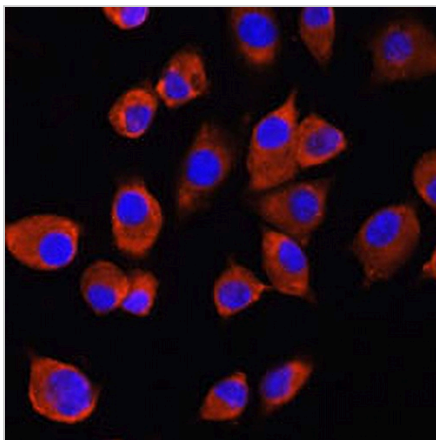
DATA



Western blot analysis of PIG-M expression in BxPC3 (A), mouse spleen (B), mouse lung (C), rat spleen (D) whole cell lysates. (Predicted band size: 49 kD; Observed band size: 49 kD)



Immunohistochemical analysis of PIG-M staining in rat kidney formalin fixed paraffin embedded tissue section. The section was pre-treated using heat mediated antigen retrieval with sodium citrate buffer (pH 6.0). The section was then incubated with the antibody at room temperature and detected using an HRP conjugated compact polymer system. DAB was used as the chromogen. The section was then counterstained with haematoxylin and mounted with DPX.



Immunofluorescent analysis of PIG-M staining in L929 cells. Formalin-fixed cells were permeabilized with 0.1% Triton X-100 in TBS for 5-10 minutes and blocked with 3% BSA-PBS for 30 minutes at room temperature. Cells were probed with the primary antibody in 3% BSA-PBS and incubated overnight at 4 °C in a humidified chamber. Cells were washed with PBST and incubated with a AREX® Fluor 594-conjugated secondary antibody (red) in PBS at room temperature in the dark. DAPI was used to stain the cell nuclei (blue).

STORAGE

Store at 4°C short term. For long term storage, store at -20°C, avoiding freeze/thaw cycles.

NOTE

For Research Use Only. Not for diagnostic, therapeutics, prophylactic or in vivo use.