

DATASHEET

PIG-T Rabbit Polyclonal Antibody

CAT. NO. APA16496

KEY FEATURES

Target	PIG-T	Source / Host	Rabbit
Reactivity	Human, Mouse, Rat	Clonality	Polyclonal
Applications	WB	Conjugation	Unconjugated
Form / Buffer	Liquid in 0.42% Potassium phosphate, 0.87% Sodium chloride, pH 7.3, 30% glycerol, and 0.01% sodium azide.		Storage at -20°C

BACKGROUND

Component of the glycosylphosphatidylinositol-anchor (GPI-anchor) transamidase (GPI-T) complex that catalyzes the formation of the linkage between a proprotein and a GPI-anchor and participates in GPI anchored protein biosynthesis transamidase (GPI-T) complex that catalyzes the formation of the linkage between a proprotein and a GPI-anchor and participates in GPI anchored protein biosynthesis . May play a crucial role in GPI-T complex assembly in the luminal layer . Binds GPI-anchor .

APPLICATION

To ensure optimal assay performance, AREX recommends conducting reagent titration tailored to each testing system for optimal detection results.

WB	1:500 - 1:2000
----	----------------

*Results are sample-specific. Please refer to your local assay conditions and test parameters for reference.

PRODUCT OVERVIEW

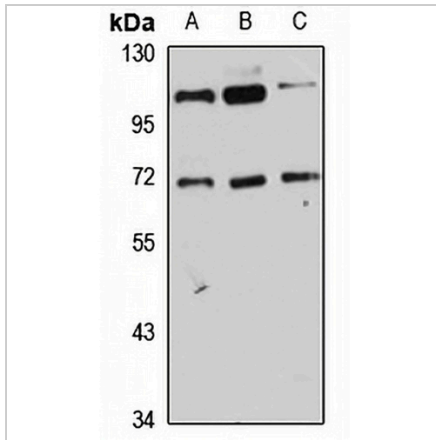
Description	Rabbit polyclonal antibody to PIG-T
Specificity	Recognizes endogenous levels of PIG-T protein
Antibody Type	Primary antibody
Immunogen	Recombinant fusion protein of human PIG-T. The exact sequence is proprietary.
Purification	The antibody was purified by immunogen affinity chromatography.
Molecular Weight	Predicted: 41; Observed: 66 kD
Form/Buffer	Liquid in 0.42% Potassium phosphate, 0.87% Sodium chloride, pH 7.3, 30% glycerol, and 0.01% sodium azide.
Alternative Names	GPI transamidase component PIG-T; Phosphatidylinositol-glycan biosynthesis class T protein
Gene Symbol	PIGT
Entrez Gene	51604(Human); 78928(Mouse)
SwissProt	Q969N2(Human); Q8BXQ2(Mouse)

*AREX continuously optimizes our products. Webpage content may not reflect the latest updates. For inquiries, please contact info@arexbio.com or your local distributor.

*Clone Number, Reactivity, Source/Host and Clonality can be found in the product name and Key Features section above.

DATASHEET**PIG-T Rabbit Polyclonal Antibody**

CAT. NO. APA16496

DATA

Western blot analysis of PIG-T expression in A431 (A), mouse testis (B), rat brain (C) whole cell lysates. (Predicted band size: 41; 43; 54; 57; 59; 65 kD; Observed band size: 66 kD)

STORAGE

Store at 4°C short term. For long term storage, store at -20°C, avoiding freeze/thaw cycles.

NOTE

For Research Use Only. Not for diagnostic, therapeutics, prophylactic or in vivo use.