

DATASHEET

Pitx2 Rabbit Polyclonal Antibody

CAT. NO. APA16508

KEY FEATURES

Target	Pitx2	Source / Host	Rabbit
Reactivity	Human, Mouse, Rat	Clonality	Polyclonal
Applications	WB	Conjugation	Unconjugated
Form / Buffer	Liquid in 0.42% Potassium phosphate, 0.87% Sodium chloride, pH 7.3, 30% glycerol, and 0.01% sodium azide.		Storage at -20°C

BACKGROUND

May play a role in myoblast differentiation. When unphosphorylated, associates with an ELAVL1-containing complex, which stabilizes cyclin mRNA and ensuring cell proliferation. Phosphorylation by AKT2 impairs this association, leading to CCND1 mRNA destabilization and progression towards differentiation.

APPLICATION

To ensure optimal assay performance, AREX recommends conducting reagent titration tailored to each testing system for optimal detection results.

WB	1:500 - 1:2000
----	----------------

*Results are sample-specific. Please refer to your local assay conditions and test parameters for reference.

PRODUCT OVERVIEW

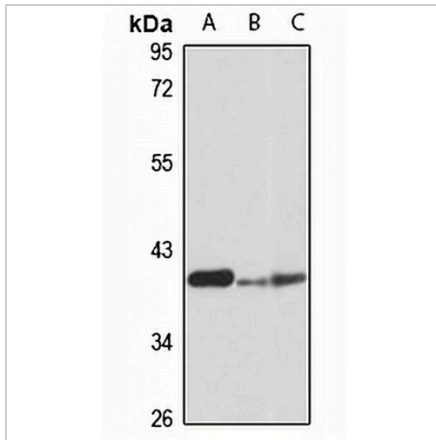
Description	Rabbit polyclonal antibody to Pitx2
Specificity	Recognizes endogenous levels of Pitx2 protein
Antibody Type	Primary antibody
Immunogen	KLH-conjugated synthetic peptide of human Pitx2. The exact sequence is proprietary.
Purification	The antibody was purified by immunogen affinity chromatography.
Molecular Weight	Predicted: 30; Observed: 35 kD
Form/Buffer	Liquid in 0.42% Potassium phosphate, 0.87% Sodium chloride, pH 7.3, 30% glycerol, and 0.01% sodium azide.
Alternative Names	ARP1; RGS; RIEG; RIEG1; Pituitary homeobox 2; ALL1-responsive protein ARP1; Homeobox protein PITX2; Paired-like homeodomain transcription factor 2; RIEG bicoid-related homeobox transcription factor; Solurshin
Gene Symbol	PITX2
Entrez Gene	5308(Human); 18741(Mouse); 54284(Rat)
SwissProt	Q99697(Human); P97474(Mouse); Q9R0W1(Rat)

*AREX continuously optimizes our products. Webpage content may not reflect the latest updates. For inquiries, please contact info@arexbio.com or your local distributor.

*Clone Number, Reactivity, Source/Host and Clonality can be found in the product name and Key Features section above.

DATASHEET**Pitx2 Rabbit Polyclonal Antibody**

CAT. NO. APA16508

DATA

Western blot analysis of Pitx2 expression in HeLa (A), mouse brain (B), rat brain (C) whole cell lysates. (Predicted band size: 30; 35 kD; Observed band size: 35 kD)

STORAGE

Store at 4°C short term. For long term storage, store at -20°C, avoiding freeze/thaw cycles.

NOTE

For Research Use Only. Not for diagnostic, therapeutics, prophylactic or in vivo use.