

DATASHEET

PLA2G12A Rabbit Polyclonal Antibody

CAT. NO. APA16511

KEY FEATURES

Target	PLA2G12A	Source / Host	Rabbit
Reactivity	Human, Mouse	Clonality	Polyclonal
Applications	WB	Conjugation	Unconjugated
Form / Buffer	Liquid in 0.42% Potassium phosphate, 0.87% Sodium chloride, pH 7.3, 30% glycerol, and 0.01% sodium azide.		Storage at -20°C

BACKGROUND

PA2 catalyzes the calcium-dependent hydrolysis of the 2-acyl groups in 3-sn-phosphoglycerides. Does not exhibit detectable activity toward sn-2-arachidonoyl- or linoleoyl-phosphatidylcholine or -phosphatidylethanolamine.

APPLICATION

To ensure optimal assay performance, AREX recommends conducting reagent titration tailored to each testing system for optimal detection results.

WB	1:500 - 1:2000
----	----------------

*Results are sample-specific. Please refer to your local assay conditions and test parameters for reference.

PRODUCT OVERVIEW

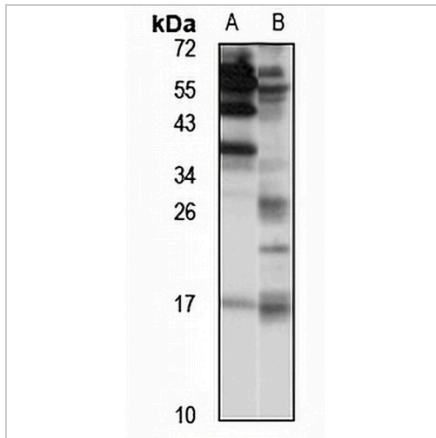
Description	Rabbit polyclonal antibody to PLA2G12A
Specificity	Recognizes endogenous levels of PLA2G12A protein
Antibody Type	Primary antibody
Immunogen	KLH-conjugated synthetic peptide of human PLA2G12A. The exact sequence is proprietary.
Purification	The antibody was purified by immunogen affinity chromatography.
Molecular Weight	Predicted: 21 kD; Observed: 17 kD
Form/Buffer	Liquid in 0.42% Potassium phosphate, 0.87% Sodium chloride, pH 7.3, 30% glycerol, and 0.01% sodium azide.
Alternative Names	PLA2G12; Group XIIA secretory phospholipase A2; GXII sPLA2; sPLA2-XII; Phosphatidylcholine 2-acylhydrolase 12A
Gene Symbol	PLA2G12A
Entrez Gene	81579(Human); 66350(Mouse)
SwissProt	Q9BZM1(Human); Q9EPR2(Mouse)

*AREX continuously optimizes our products. Webpage content may not reflect the latest updates. For inquiries, please contact info@arexbio.com or your local distributor.

*Clone Number, Reactivity, Source/Host and Clonality can be found in the product name and Key Features section above.

DATASHEET**PLA2G12A Rabbit Polyclonal Antibody**

CAT. NO. APA16511

DATA

Western blot analysis of PLA2G12A expression in HepG2 (A), mouse pancreas (B) whole cell lysates. (Predicted band size: 21 kDa; Observed band size: 17 kDa)

STORAGE

Store at 4°C short term. For long term storage, store at -20°C, avoiding freeze/thaw cycles.

NOTE

For Research Use Only. Not for diagnostic, therapeutics, prophylactic or in vivo use.