

DATASHEET

PLA2G7 Rabbit Polyclonal Antibody

CAT. NO. APA16512

KEY FEATURES

Target	PLA2G7	Source / Host	Rabbit
Reactivity	Human	Clonality	Polyclonal
Applications	WB	Conjugation	Unconjugated
Form / Buffer	Liquid in 0.42% Potassium phosphate, 0.87% Sodium chloride, pH 7.3, 30% glycerol, and 0.01% sodium azide.		Storage at -20°C

BACKGROUND

Lipoprotein-associated calcium-independent phospholipase A2 involved in phospholipid catabolism during inflammatory and oxidative stress response . At the lipid-aqueous interface, hydrolyzes the ester bond of fatty acyl group attached at sn-2 position of phospholipids (phospholipase A2 activity) . Specifically targets phospholipids with a short-chain fatty acyl group at sn-2 position . Can hydrolyze phospholipids with long fatty acyl chains, only if they carry oxidized functional groups . Hydrolyzes and inactivates platelet-activating factor (PAF, 1-O-alkyl-2-acetyl-sn-glycero-3-phosphocholine), a potent pro-inflammatory signaling lipid that acts through PTAFR on various innate immune cells .

APPLICATION

To ensure optimal assay performance, AREX recommends conducting reagent titration tailored to each testing system for optimal detection results.

WB	1:500 - 1:1000
----	----------------

*Results are sample-specific. Please refer to your local assay conditions and test parameters for reference.

PRODUCT OVERVIEW

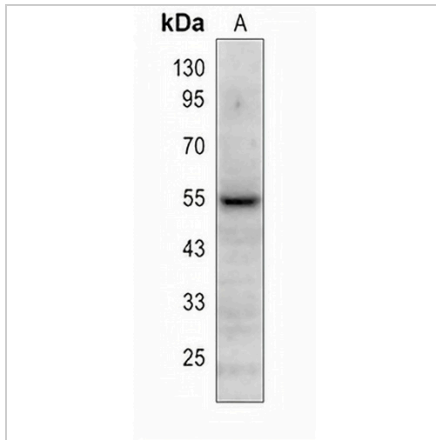
Description	Rabbit polyclonal antibody to PLA2G7
Specificity	Recognizes endogenous levels of PLA2G7 protein
Antibody Type	Primary antibody
Immunogen	Recombinant fusion protein of human PLA2G7. The exact sequence is proprietary.
Purification	The antibody was purified by immunogen affinity chromatography.
Molecular Weight	Predicted: 50 kD; Observed: 55 kD
Form/Buffer	Liquid in 0.42% Potassium phosphate, 0.87% Sodium chloride, pH 7.3, 30% glycerol, and 0.01% sodium azide.
Alternative Names	PAFAH; Platelet-activating factor acetylhydrolase; PAF acetylhydrolase; 1-alkyl-2-acetyl-glycerophosphocholine esterase; 2-acetyl-1-alkyl-glycerophosphocholine esterase; Group-VIIIA phospholipase A2; gVIIA-PLA2; LDL-associated phospholipase A2; LDL-PLA(2); PAF 2-acylhydrolase
Gene Symbol	PLA2G7
Entrez Gene	7941(Human)
SwissProt	Q13093(Human)

*AREX continuously optimizes our products. Webpage content may not reflect the latest updates. For inquiries, please contact info@arexbio.com or your local distributor.

*Clone Number, Reactivity, Source/Host and Clonality can be found in the product name and Key Features section above.

DATASHEET**PLA2G7 Rabbit Polyclonal Antibody**

CAT. NO. APA16512

DATA

Western blot analysis of PLA2G7 expression in human serum (A) whole cell lysates.
(Predicted band size: 50 kD; Observed band size: 55 kD)

STORAGE

Store at 4°C short term. For long term storage, store at -20°C, avoiding freeze/thaw cycles.

NOTE

For Research Use Only. Not for diagnostic, therapeutics, prophylactic or in vivo use.