

DATASHEET

PLAP Rabbit Polyclonal Antibody

CAT. NO. APA16513

KEY FEATURES

Target	PLAP	Source / Host	Rabbit
Reactivity	Human, Mouse, Rat	Clonality	Polyclonal
Applications	WB	Conjugation	Unconjugated
Form / Buffer	Liquid in 0.42% Potassium phosphate, 0.87% Sodium chloride, pH 7.3, 30% glycerol, and 0.01% sodium azide.		Storage at-20°C

BACKGROUND

Plays a role in protein ubiquitination, sorting and degradation through its association with VCP . Involved in ubiquitin-mediated membrane proteins trafficking to late endosomes in an ESCRT-dependent manner, and hence plays a role in synaptic vesicle recycling . May play a role in macroautophagy, regulating for instance the clearance of damaged lysosomes . Plays a role in cerebellar Purkinje cell development . Positively regulates cytosolic and calcium-independent phospholipase A2 activities in a tumor necrosis factor alpha (TNF)- or lipopolysaccharide (LPS)-dependent manner, and hence prostaglandin E2 biosynthesis .

APPLICATION

To ensure optimal assay performance, AREX recommends conducting reagent titration tailored to each testing system for optimal detection results.

WB	1:500 - 1:2000
----	----------------

*Results are sample-specific. Please refer to your local assay conditions and test parameters for reference.

PRODUCT OVERVIEW

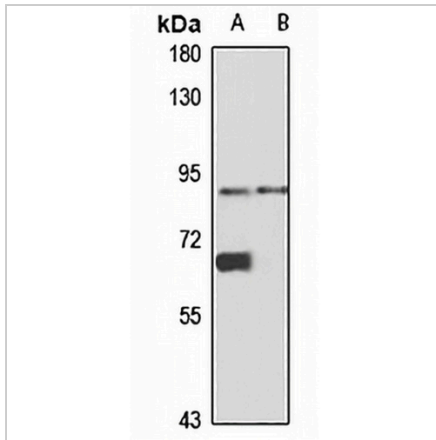
Description	Rabbit polyclonal antibody to PLAP
Specificity	Recognizes endogenous levels of PLAP protein
Antibody Type	Primary antibody
Immunogen	Recombinant fusion protein of human PLAP. The exact sequence is proprietary.
Purification	The antibody was purified by immunogen affinity chromatography.
Molecular Weight	Predicted: 87 kD; Observed: 87 kD
Form/Buffer	Liquid in 0.42% Potassium phosphate, 0.87% Sodium chloride, pH 7.3, 30% glycerol, and 0.01% sodium azide.
Alternative Names	PLAP; Phospholipase A-2-activating protein; PLA2P; PLAP
Gene Symbol	PLAA
Entrez Gene	9373(Human); 18786(Mouse); 116645(Rat)
SwissProt	Q9Y263(Human); P27612(Mouse); P54319(Rat)

*AREX continuously optimizes our products. Webpage content may not reflect the latest updates. For inquiries, please contact info@arexbio.com or your local distributor.

*Clone Number, Reactivity, Source/Host and Clonality can be found in the product name and Key Features section above.

DATASHEET**PLAP Rabbit Polyclonal Antibody**

CAT. NO. APA16513

DATA

Western blot analysis of PLAP expression in A549 (A), mouse brain (B) whole cell lysates.
(Predicted band size: 87 kD; Observed band size: 87 kD)

STORAGE

Store at 4°C short term. For long term storage, store at -20°C, avoiding freeze/thaw cycles.

NOTE

For Research Use Only. Not for diagnostic, therapeutics, prophylactic or in vivo use.