

DATASHEET

PLP1 Rabbit Polyclonal Antibody

CAT. NO. APA16520

KEY FEATURES

Target	PLP1	Source / Host	Rabbit
Reactivity	Human, Mouse, Rat	Clonality	Polyclonal
Applications	WB	Conjugation	Unconjugated
Form / Buffer	Liquid in 0.42% Potassium phosphate, 0.87% Sodium chloride, pH 7.3, 30% glycerol, and 0.01% sodium azide.	Storage	at-20°C

BACKGROUND

This is the major myelin protein from the central nervous system. It plays an important role in the formation or maintenance of the multilamellar structure of myelin.

APPLICATION

To ensure optimal assay performance, AREX recommends conducting reagent titration tailored to each testing system for optimal detection results.

WB	1:500 - 1:2000
----	----------------

*Results are sample-specific. Please refer to your local assay conditions and test parameters for reference.

PRODUCT OVERVIEW

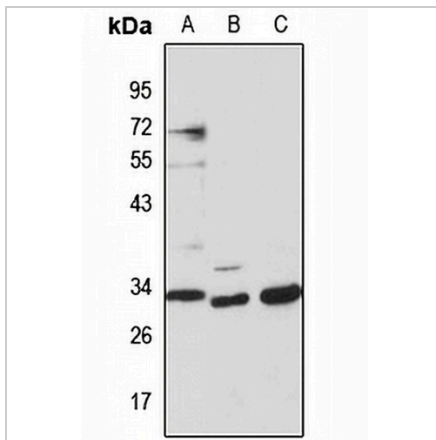
Description	Rabbit polyclonal antibody to PLP1
Specificity	Recognizes endogenous levels of PLP1 protein
Antibody Type	Primary antibody
Immunogen	Recombinant fusion protein of human PLP1. The exact sequence is proprietary.
Purification	The antibody was purified by immunogen affinity chromatography.
Molecular Weight	Predicted: 26; Observed: 34 kD
Form/Buffer	Liquid in 0.42% Potassium phosphate, 0.87% Sodium chloride, pH 7.3, 30% glycerol, and 0.01% sodium azide.
Alternative Names	PLP; Myelin proteolipid protein; PLP; Lipophilin
Gene Symbol	PLP1
Entrez Gene	5354(Human); 18823(Mouse); 24943(Rat)
SwissProt	P60201(Human); P60202(Mouse); P60203(Rat)

*AREX continuously optimizes our products. Webpage content may not reflect the latest updates. For inquiries, please contact info@arexbio.com or your local distributor.

*Clone Number, Reactivity, Source/Host and Clonality can be found in the product name and Key Features section above.

DATASHEET**PLP1 Rabbit Polyclonal Antibody**

CAT. NO. APA16520

DATA

Western blot analysis of PLP1 expression in HeLa (A), mouse kidney (B), mouse liver (C) whole cell lysates. (Predicted band size: 26; 30 kD; Observed band size: 34 kD)

STORAGE

Store at 4°C short term. For long term storage, store at -20°C, avoiding freeze/thaw cycles.

NOTE

For Research Use Only. Not for diagnostic, therapeutics, prophylactic or in vivo use.