

**DATASHEET**

**PLRG1 Rabbit Polyclonal Antibody**

CAT. NO. APA16521

**KEY FEATURES**

Target	PLRG1	Source / Host	Rabbit
Reactivity	Human, Mouse, Rat	Clonality	Polyclonal
Applications	WB	Conjugation	Unconjugated
Form / Buffer	Liquid in 0.42% Potassium phosphate, 0.87% Sodium chloride, pH 7.3, 30% glycerol, and 0.01% sodium azide.		Storage at-20°C

**BACKGROUND**

Involved in pre-mRNA splicing as component of the spliceosome . Component of the PRP19-CDC5L complex that forms an integral part of the spliceosome and is required for activating pre-mRNA splicing . As a component of the minor spliceosome, involved in the splicing of U12-type introns in pre-mRNAs (Probable).

**APPLICATION**

To ensure optimal assay performance, AREX recommends conducting reagent titration tailored to each testing system for optimal detection results.

WB	1:500 - 1:2000
----	----------------

\*Results are sample-specific. Please refer to your local assay conditions and test parameters for reference.

**PRODUCT OVERVIEW**

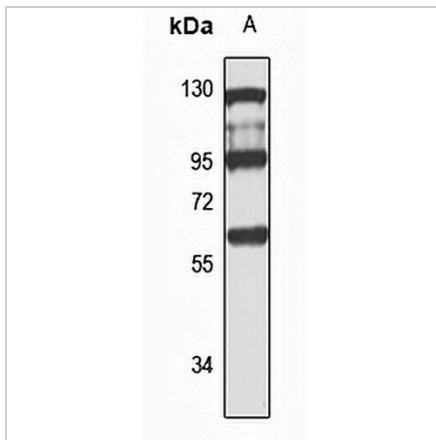
Description	Rabbit polyclonal antibody to PLRG1
Specificity	Recognizes endogenous levels of PLRG1 protein
Antibody Type	Primary antibody
Immunogen	Recombinant fusion protein of human PLRG1. The exact sequence is proprietary.
Purification	The antibody was purified by immunogen affinity chromatography.
Molecular Weight	Predicted: 56; Observed: 57 kD
Form/Buffer	Liquid in 0.42% Potassium phosphate, 0.87% Sodium chloride, pH 7.3, 30% glycerol, and 0.01% sodium azide.
Alternative Names	Pleiotropic regulator 1
Gene Symbol	PLRG1
Entrez Gene	5356(Human); 53317(Mouse); 60376(Rat)
SwissProt	O43660(Human); Q922V4(Mouse); Q9WUC8(Rat)

\*AREX continuously optimizes our products. Webpage content may not reflect the latest updates. For inquiries, please contact [info@arexbio.com](mailto:info@arexbio.com) or your local distributor.

\*Clone Number, Reactivity, Source/Host and Clonality can be found in the product name and Key Features section above.

**DATASHEET****PLRG1 Rabbit Polyclonal Antibody**

CAT. NO. APA16521

**DATA**

Western blot analysis of PLRG1 expression in mouse thymus (A) whole cell lysates.  
(Predicted band size: 56; 57 kD; Observed band size: 57 kD)

**STORAGE**

Store at 4°C short term. For long term storage, store at -20°C, avoiding freeze/thaw cycles.

**NOTE**

For Research Use Only. Not for diagnostic, therapeutics, prophylactic or in vivo use.