

DATASHEET

I-plastin Rabbit Polyclonal Antibody

CAT. NO. APA16522

KEY FEATURES

Target	I-plastin	Source / Host	Rabbit
Reactivity	Human, Mouse, Rat	Clonality	Polyclonal
Applications	WB, IHC	Conjugation	Unconjugated
Form / Buffer	Liquid in 0.42% Potassium phosphate, 0.87% Sodium chloride, pH 7.3, 30% glycerol, and 0.01% sodium azide.		Storage at -20°C

BACKGROUND

Actin-bundling protein. In the inner ear, it is required for stereocilia formation. Mediates liquid packing of actin filaments that is necessary for stereocilia to grow to their proper dimensions.

APPLICATION

To ensure optimal assay performance, AREX recommends conducting reagent titration tailored to each testing system for optimal detection results.

WB	1:500 - 1:2000
IHC	1:50 - 1:200

*Results are sample-specific. Please refer to your local assay conditions and test parameters for reference.

PRODUCT OVERVIEW

Description	Rabbit polyclonal antibody to I-plastin
Specificity	Recognizes endogenous levels of I-plastin protein
Antibody Type	Primary antibody
Immunogen	Recombinant fusion protein of human I-plastin. The exact sequence is proprietary.
Purification	The antibody was purified by immunogen affinity chromatography.
Molecular Weight	Predicted: 70 kD; Observed: 70 kD
Form/Buffer	Liquid in 0.42% Potassium phosphate, 0.87% Sodium chloride, pH 7.3, 30% glycerol, and 0.01% sodium azide.
Alternative Names	Plastin-1; Intestine-specific plastin; I-plastin
Gene Symbol	PLS1
Entrez Gene	5357(Human); 102502(Mouse)
SwissProt	Q14651(Human); Q3V0K9(Mouse)

*AREX continuously optimizes our products. Webpage content may not reflect the latest updates. For inquiries, please contact info@arexbio.com or your local distributor.

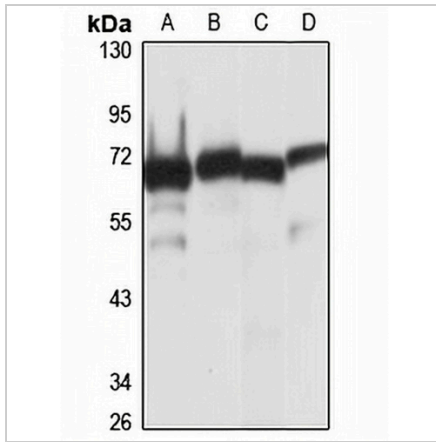
*Clone Number, Reactivity, Source/Host and Clonality can be found in the product name and Key Features section above.

DATASHEET

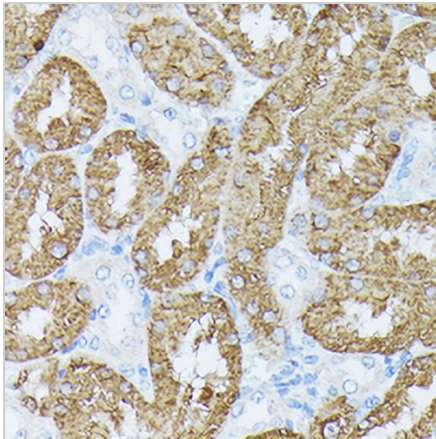
I-plastin Rabbit Polyclonal Antibody

CAT. NO. APA16522

DATA



Western blot analysis of I-plastin expression in HEK293T (A), mouse brain (B), mouse liver (C), rat spleen (D) whole cell lysates. (Predicted band size: 70 kD; Observed band size: 70 kD)



Immunohistochemical analysis of I-plastin staining in rat kidney formalin fixed paraffin embedded tissue section. The section was pre-treated using heat mediated antigen retrieval with sodium citrate buffer (pH 6.0). The section was then incubated with the antibody at room temperature and detected using an HRP conjugated compact polymer system. DAB was used as the chromogen. The section was then counterstained with haematoxylin and mounted with DPX.

STORAGE

Store at 4°C short term. For long term storage, store at -20°C, avoiding freeze/thaw cycles.

NOTE

For Research Use Only. Not for diagnostic, therapeutics, prophylactic or in vivo use.