

DATASHEET

PLSCR4 Rabbit Polyclonal Antibody

CAT. NO. APA16523

KEY FEATURES

Target	PLSCR4	Source / Host	Rabbit
Reactivity	Human, Mouse, Rat	Clonality	Polyclonal
Applications	WB	Conjugation	Unconjugated
Form / Buffer	Liquid in 0.42% Potassium phosphate, 0.87% Sodium chloride, pH 7.3, 30% glycerol, and 0.01% sodium azide.		Storage at -20°C

BACKGROUND

Catalyzes metal ion-induced ATP-independent rapid bidirectional and non-specific movement of phospholipids (lipid scrambling or lipid flip-flop) between the inner and outer leaflet of the plasma membrane and participates in the redistribution of phospholipids between membrane leaflets between the inner and outer leaflet of the plasma membrane and participates in the redistribution of phospholipids between membrane leaflets. Metal ions bind to the calcium-binding site and induce conformation change in the protein. Has a greater affinity for Ca(2+) than Mg(2+) and Zn(2+).

APPLICATION

To ensure optimal assay performance, AREX recommends conducting reagent titration tailored to each testing system for optimal detection results.

WB	1:500 - 1:2000
----	----------------

*Results are sample-specific. Please refer to your local assay conditions and test parameters for reference.

PRODUCT OVERVIEW

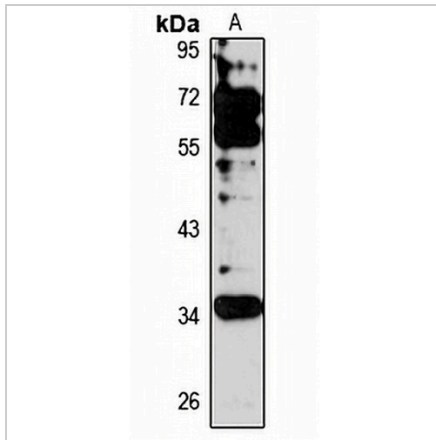
Description	Rabbit polyclonal antibody to PLSCR4
Specificity	Recognizes endogenous levels of PLSCR4 protein
Antibody Type	Primary antibody
Immunogen	Recombinant fusion protein of human PLSCR4. The exact sequence is proprietary.
Purification	The antibody was purified by immunogen affinity chromatography.
Molecular Weight	Predicted: 24; Observed: 37 kD
Form/Buffer	Liquid in 0.42% Potassium phosphate, 0.87% Sodium chloride, pH 7.3, 30% glycerol, and 0.01% sodium azide.
Alternative Names	Phospholipid scramblase 4; PL scramblase 4; Ca(2+)-dependent phospholipid scramblase 4; Cell growth-inhibiting gene 43 protein; TRA1
Gene Symbol	PLSCR4
Entrez Gene	57088(Human); 235527(Mouse)
SwissProt	Q9NRQ2(Human); P58196(Mouse)

*AREX continuously optimizes our products. Webpage content may not reflect the latest updates. For inquiries, please contact info@arexbio.com or your local distributor.

*Clone Number, Reactivity, Source/Host and Clonality can be found in the product name and Key Features section above.

DATASHEET**PLSCR4 Rabbit Polyclonal Antibody**

CAT. NO. APA16523

DATA

Western blot analysis of PLSCR4 expression in 22Rv1 (A) whole cell lysates. (Predicted band size: 24; 37 kD; Observed band size: 37 kD)

STORAGE

Store at 4°C short term. For long term storage, store at -20°C, avoiding freeze/thaw cycles.

NOTE

For Research Use Only. Not for diagnostic, therapeutics, prophylactic or in vivo use.