

## DATASHEET

# Plexin B1 Rabbit Polyclonal Antibody

CAT. NO. APA16525

### KEY FEATURES

Target	Plexin B1	Source / Host	Rabbit
Reactivity	Human, Mouse	Clonality	Polyclonal
Applications	WB	Conjugation	Unconjugated
Form / Buffer	Liquid in 0.42% Potassium phosphate, 0.87% Sodium chloride, pH 7.3, 30% glycerol, and 0.01% sodium azide.		Storage at -20°C

### BACKGROUND

Receptor for SEMA4D . Plays a role in GABAergic synapse development . Mediates SEMA4A- and SEMA4D-dependent inhibitory synapse development . Plays a role in RHOA activation and subsequent changes of the actin cytoskeleton . Plays a role in axon guidance, invasive growth and cell migration .

### APPLICATION

To ensure optimal assay performance, AREX recommends conducting reagent titration tailored to each testing system for optimal detection results.

WB	1:500 - 1:2000
----	----------------

\*Results are sample-specific. Please refer to your local assay conditions and test parameters for reference.

### PRODUCT OVERVIEW

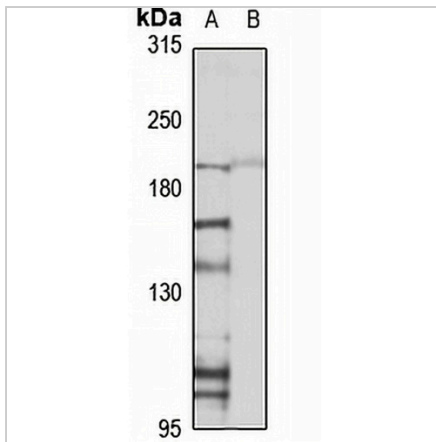
Description	Rabbit polyclonal antibody to Plexin B1
Specificity	Recognizes endogenous levels of Plexin B1 protein
Antibody Type	Primary antibody
Immunogen	Recombinant fusion protein of human Plexin B1. The exact sequence is proprietary.
Purification	The antibody was purified by immunogen affinity chromatography.
Molecular Weight	Predicted: 78; Observed: 232 kD
Form/Buffer	Liquid in 0.42% Potassium phosphate, 0.87% Sodium chloride, pH 7.3, 30% glycerol, and 0.01% sodium azide.
Alternative Names	KIAA0407; PLXN5; SEP; Plexin-B1; Semaphorin receptor SEP
Gene Symbol	PLXNB1
Entrez Gene	5364(Human); 235611(Mouse)
SwissProt	O43157(Human); Q8CJH3(Mouse)

\*AREX continuously optimizes our products. Webpage content may not reflect the latest updates. For inquiries, please contact [info@arexbio.com](mailto:info@arexbio.com) or your local distributor.

\*Clone Number, Reactivity, Source/Host and Clonality can be found in the product name and Key Features section above.

**DATASHEET****Plexin B1 Rabbit Polyclonal Antibody**

CAT. NO. APA16525

**DATA**

Western blot analysis of Plexin B1 expression in LO2 (A), mouse lung (B) whole cell lysates. (Predicted band size: 78; 214; 232 kD; Observed band size: 232 kD)

**STORAGE**

Store at 4°C short term. For long term storage, store at -20°C, avoiding freeze/thaw cycles.

**NOTE**

For Research Use Only. Not for diagnostic, therapeutics, prophylactic or in vivo use.