

**DATASHEET**

**Plexin-B2 Rabbit Polyclonal Antibody**

CAT. NO. APA16526

**KEY FEATURES**

Target	Plexin-B2	Source / Host	Rabbit
Reactivity	Human, Mouse, Rat	Clonality	Polyclonal
Applications	WB	Conjugation	Unconjugated
Form / Buffer	Liquid in 0.42% Potassium phosphate, 0.87% Sodium chloride, pH 7.3, 30% glycerol, and 0.01% sodium azide.		Storage at -20°C

**BACKGROUND**

Cell surface receptor for SEMA4C, SEMA4D and SEMA4G that plays an important role in cell-cell signaling . Plays a role in glutamatergic synapse development and is required for SEMA4A-mediated excitatory synapse development . Binding to class 4 semaphorins promotes downstream activation of RHOA and phosphorylation of ERBB2 at 'Tyr-1248' . Also acts as a cell surface receptor for angiogenin (ANG); promoting ANG endocytosis and translocation to the cytoplasm or nucleus ; promoting ANG endocytosis and translocation to the cytoplasm or nucleus . Required for normal differentiation and migration of neuronal cells during brain corticogenesis and for normal embryonic brain development . Regulates the migration of cerebellar granule cells in the developing brain .

**APPLICATION**

To ensure optimal assay performance, AREX recommends conducting reagent titration tailored to each testing system for optimal detection results.

WB	1:500 - 1:2000
----	----------------

\*Results are sample-specific. Please refer to your local assay conditions and test parameters for reference.

**PRODUCT OVERVIEW**

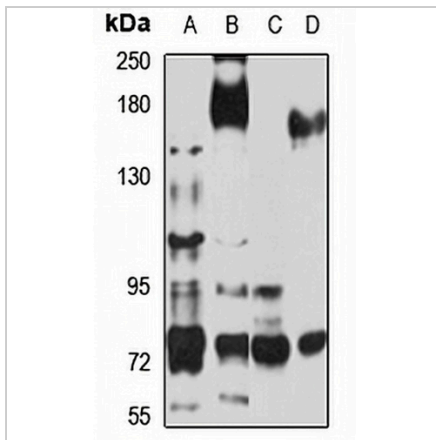
Description	Rabbit polyclonal antibody to Plexin-B2
Specificity	Recognizes endogenous levels of Plexin-B2 protein
Antibody Type	Primary antibody
Immunogen	Recombinant fusion protein of human Plexin-B2. The exact sequence is proprietary.
Purification	The antibody was purified by immunogen affinity chromatography.
Molecular Weight	Predicted: 205 kD; Observed: 80 kD
Form/Buffer	Liquid in 0.42% Potassium phosphate, 0.87% Sodium chloride, pH 7.3, 30% glycerol, and 0.01% sodium azide.
Alternative Names	KIAA0315; Plexin-B2; MM1
Gene Symbol	PLXNB2
Entrez Gene	23654(Human); 140570(Mouse); 315217(Rat)
SwissProt	O15031(Human); B2RXS4(Mouse); D3ZQ57(Rat)

\*AREX continuously optimizes our products. Webpage content may not reflect the latest updates. For inquiries, please contact [info@arexbio.com](mailto:info@arexbio.com) or your local distributor.

\*Clone Number, Reactivity, Source/Host and Clonality can be found in the product name and Key Features section above.

**DATASHEET****Plexin-B2 Rabbit Polyclonal Antibody**

CAT. NO. APA16526

**DATA**

Western blot analysis of Plexin-B2 expression in SHSY5Y (A), SKOV3 (B), mouse kidney (C), rat liver (D) whole cell lysates. (Predicted band size: 205 kD; Observed band size: 80 kD)

**STORAGE**

Store at 4°C short term. For long term storage, store at -20°C, avoiding freeze/thaw cycles.

**NOTE**

For Research Use Only. Not for diagnostic, therapeutics, prophylactic or in vivo use.