

DATASHEET

MA1 Rabbit Polyclonal Antibody

CAT. NO. APA16533

KEY FEATURES

Target	MA1	Source / Host	Rabbit
Reactivity	Human, Mouse, Rat	Clonality	Polyclonal
Applications	WB	Conjugation	Unconjugated
Form / Buffer	Liquid in 0.42% Potassium phosphate, 0.87% Sodium chloride, pH 7.3, 30% glycerol, and 0.01% sodium azide.		Storage at -20°C

BACKGROUND

This gene encodes a neuron- and testis-specific protein that is also expressed in some paraneoplastic syndromes affecting the nervous system. Some patients with neurologic disorders develop antibodies against the protein encoded by this gene. The identification of the antineuronal antibodies in the sera of these patients has facilitated the diagnosis of paraneoplastic neurological disorders and the early detection of the associated tumors.

APPLICATION

To ensure optimal assay performance, AREX recommends conducting reagent titration tailored to each testing system for optimal detection results.

WB	1:500 - 1:2000
----	----------------

*Results are sample-specific. Please refer to your local assay conditions and test parameters for reference.

PRODUCT OVERVIEW

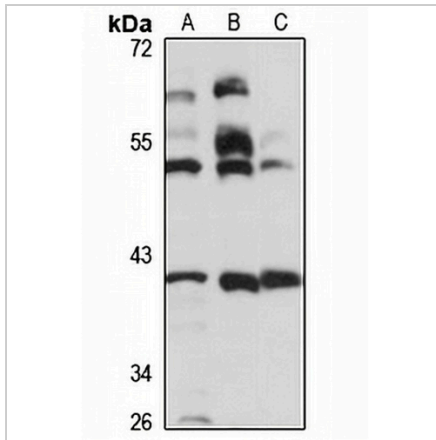
Description	Rabbit polyclonal antibody to MA1
Specificity	Recognizes endogenous levels of MA1 protein
Antibody Type	Primary antibody
Immunogen	Recombinant fusion protein of human MA1. The exact sequence is proprietary.
Purification	The antibody was purified by immunogen affinity chromatography.
Molecular Weight	Predicted: 39 kD; Observed: 38 kD
Form/Buffer	Liquid in 0.42% Potassium phosphate, 0.87% Sodium chloride, pH 7.3, 30% glycerol, and 0.01% sodium azide.
Alternative Names	MA1; Paraneoplastic antigen Ma1; 37 kDa neuronal protein; Neuron- and testis-specific protein 1
Gene Symbol	PNMA1
Entrez Gene	9240(Human); 70481(Mouse); 170636(Rat)
SwissProt	Q8ND90(Human); Q8C1C8(Mouse); Q8VHZ4(Rat)

*AREX continuously optimizes our products. Webpage content may not reflect the latest updates. For inquiries, please contact info@arexbio.com or your local distributor.

*Clone Number, Reactivity, Source/Host and Clonality can be found in the product name and Key Features section above.

DATASHEET**MA1 Rabbit Polyclonal Antibody**

CAT. NO. APA16533

DATA

Western blot analysis of MA1 expression in HeLa (A), mouse testis (B), rat testis (C) whole cell lysates. (Predicted band size: 39 kD; Observed band size: 38 kD)

STORAGE

Store at 4°C short term. For long term storage, store at -20°C, avoiding freeze/thaw cycles.

NOTE

For Research Use Only. Not for diagnostic, therapeutics, prophylactic or in vivo use.