

**DATASHEET**

**Podocan Rabbit Polyclonal Antibody**

CAT. NO. APA16538

**KEY FEATURES**

Target	Podocan	Source / Host	Rabbit
Reactivity	Human, Mouse	Clonality	Polyclonal
Applications	WB	Conjugation	Unconjugated
Form / Buffer	Liquid in 0.42% Potassium phosphate, 0.87% Sodium chloride, pH 7.3, 30% glycerol, and 0.01% sodium azide.		Storage at -20°C

**BACKGROUND**

Negatively regulates cell proliferation and cell migration.

**APPLICATION**

To ensure optimal assay performance, AREX recommends conducting reagent titration tailored to each testing system for optimal detection results.

WB	1:500 - 1:2000
----	----------------

\*Results are sample-specific. Please refer to your local assay conditions and test parameters for reference.

**PRODUCT OVERVIEW**

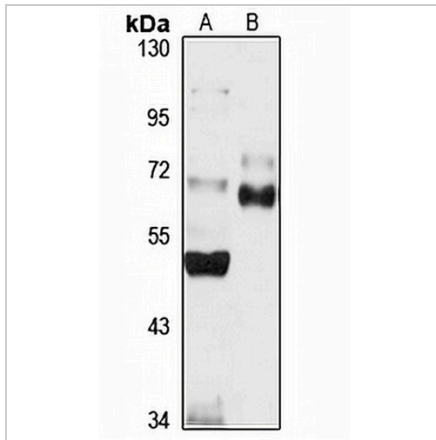
Description	Rabbit polyclonal antibody to Podocan
Specificity	Recognizes endogenous levels of Podocan protein
Antibody Type	Primary antibody
Immunogen	Recombinant fusion protein of human Podocan. The exact sequence is proprietary.
Purification	The antibody was purified by immunogen affinity chromatography.
Molecular Weight	Predicted: 57; Observed: 69 kD
Form/Buffer	Liquid in 0.42% Potassium phosphate, 0.87% Sodium chloride, pH 7.3, 30% glycerol, and 0.01% sodium azide.
Alternative Names	SLRR5A; Podocan
Gene Symbol	PODN
Entrez Gene	127435(Human); 242608(Mouse)
SwissProt	Q7Z5L7(Human); Q7TQ62(Mouse)

\*AREX continuously optimizes our products. Webpage content may not reflect the latest updates. For inquiries, please contact [info@arexbio.com](mailto:info@arexbio.com) or your local distributor.

\*Clone Number, Reactivity, Source/Host and Clonality can be found in the product name and Key Features section above.

**DATASHEET****Podocan Rabbit Polyclonal Antibody**

CAT. NO. APA16538

**DATA**

Western blot analysis of Podocan expression in U87MG (A), mouse eye (B) whole cell lysates. (Predicted band size: 57; 68; 72; 74 kD; Observed band size: 69 kD)

**STORAGE**

Store at 4°C short term. For long term storage, store at -20°C, avoiding freeze/thaw cycles.

**NOTE**

For Research Use Only. Not for diagnostic, therapeutics, prophylactic or in vivo use.