

DATASHEET

DNA Polymerase alpha 2 Rabbit Polyclonal Antibody

CAT. NO. APA16540

KEY FEATURES

Target	DNA Polymerase alpha 2	Source / Host	Rabbit
Reactivity	Human, Mouse, Rat	Clonality	Polyclonal
Applications	WB	Conjugation	Unconjugated
Form / Buffer	Liquid in 0.42% Potassium phosphate, 0.87% Sodium chloride, pH 7.3, 30% glycerol, and 0.01% sodium azide.		Storage at -20°C

BACKGROUND

Accessory subunit of the DNA polymerase alpha complex (also known as the alpha DNA polymerase-primase complex) which plays an essential role in the initiation of DNA synthesis which plays an essential role in the initiation of DNA synthesis . During the S phase of the cell cycle, the DNA polymerase alpha complex (composed of a catalytic subunit POLA1, an accessory subunit POLA2 and two primase subunits, the catalytic subunit PRIM1 and the regulatory subunit PRIM2) is recruited to DNA at the replicative forks via direct interactions with MCM10 and WDHD1 . The primase subunit of the polymerase alpha complex initiates DNA synthesis by oligomerising short RNA primers on both leading and lagging strands .

APPLICATION

To ensure optimal assay performance, AREX recommends conducting reagent titration tailored to each testing system for optimal detection results.

WB	1:500 - 1:2000
----	----------------

*Results are sample-specific. Please refer to your local assay conditions and test parameters for reference.

PRODUCT OVERVIEW

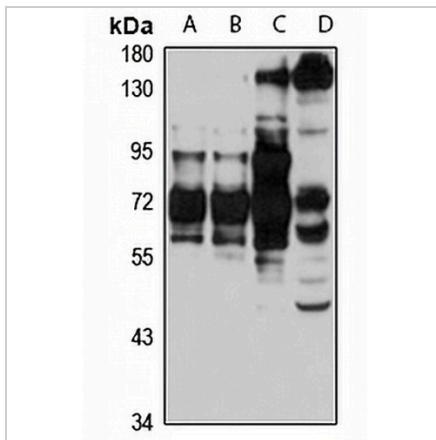
Description	Rabbit polyclonal antibody to DNA Polymerase alpha 2
Specificity	Recognizes endogenous levels of DNA Polymerase alpha 2 protein
Antibody Type	Primary antibody
Immunogen	Recombinant fusion protein of human DNA Polymerase alpha 2. The exact sequence is proprietary.
Purification	The antibody was purified by immunogen affinity chromatography.
Molecular Weight	Predicted: 40; Observed: 70 kD
Form/Buffer	Liquid in 0.42% Potassium phosphate, 0.87% Sodium chloride, pH 7.3, 30% glycerol, and 0.01% sodium azide.
Alternative Names	DNA polymerase alpha subunit B; DNA polymerase alpha 70 kDa subunit
Gene Symbol	POLA2
Entrez Gene	23649(Human); 18969(Mouse)
SwissProt	Q14181(Human); P33611(Mouse); O89043(Rat)

*AREX continuously optimizes our products. Webpage content may not reflect the latest updates. For inquiries, please contact info@arexbio.com or your local distributor.

*Clone Number, Reactivity, Source/Host and Clonality can be found in the product name and Key Features section above.

DATASHEET**DNA Polymerase alpha 2 Rabbit Polyclonal Antibody**

CAT. NO. APA16540

DATA

Western blot analysis of DNA Polymerase alpha 2 expression in Jurkat (A), HL60 (B), SW480 (C), mouse liver (D) whole cell lysates. (Predicted band size: 40; 65 kD; Observed band size: 70 kD)

STORAGE

Store at 4°C short term. For long term storage, store at -20°C, avoiding freeze/thaw cycles.

NOTE

For Research Use Only. Not for diagnostic, therapeutics, prophylactic or in vivo use.