

**DATASHEET**

**POLRMT Rabbit Polyclonal Antibody**

CAT. NO. APA16546

**KEY FEATURES**

Target	POLRMT	Source / Host	Rabbit
Reactivity	Human, Mouse, Rat	Clonality	Polyclonal
Applications	WB, IP	Conjugation	Unconjugated
Form / Buffer	Liquid in 0.42% Potassium phosphate, 0.87% Sodium chloride, pH 7.3, 30% glycerol, and 0.01% sodium azide.		Storage at-20°C

**BACKGROUND**

DNA-dependent RNA polymerase catalyzes the transcription of mitochondrial DNA into RNA using the four ribonucleoside triphosphates as substrates . Component of the mitochondrial transcription initiation complex, composed at least of TFB2M, TFAM and POLRMT that is required for basal transcription of mitochondrial DNA . In this complex, TFAM recruits POLRMT to a specific promoter whereas TFB2M induces structural changes in POLRMT to enable promoter opening and trapping of the DNA non-template strand . Has DNA primase activity . Catalyzes the synthesis of short RNA primers that are necessary for the initiation of lagging-strand DNA synthesis from the origin of light-strand DNA replication (Oril) .

**APPLICATION**

To ensure optimal assay performance, AREX recommends conducting reagent titration tailored to each testing system for optimal detection results.

WB	1:500 - 1:2000
IP	1:20 - 1:100

\*Results are sample-specific. Please refer to your local assay conditions and test parameters for reference.

**PRODUCT OVERVIEW**

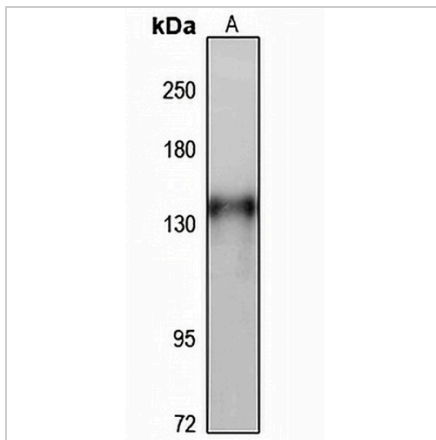
Description	Rabbit polyclonal antibody to POLRMT
Specificity	Recognizes endogenous levels of POLRMT protein
Antibody Type	Primary antibody
Immunogen	Recombinant fusion protein of human POLRMT. The exact sequence is proprietary.
Purification	The antibody was purified by immunogen affinity chromatography.
Molecular Weight	Predicted: 138 kD; Observed: 139 kD
Form/Buffer	Liquid in 0.42% Potassium phosphate, 0.87% Sodium chloride, pH 7.3, 30% glycerol, and 0.01% sodium azide.
Alternative Names	DNA-directed RNA polymerase mitochondrial; MtrPOL
Gene Symbol	POLRMT
Entrez Gene	5442(Human); 216151(Mouse)
SwissProt	O00411(Human); Q8BKF1(Mouse)

\*AREX continuously optimizes our products. Webpage content may not reflect the latest updates. For inquiries, please contact [info@arexbio.com](mailto:info@arexbio.com) or your local distributor.

\*Clone Number, Reactivity, Source/Host and Clonality can be found in the product name and Key Features section above.

**DATASHEET****POLRMT Rabbit Polyclonal Antibody**

CAT. NO. APA16546

**DATA**

Western blot analysis of POLRMT expression in HepG2 (A) whole cell lysates. (Predicted band size: 138 kD; Observed band size: 139 kD)

**STORAGE**

Store at 4°C short term. For long term storage, store at -20°C, avoiding freeze/thaw cycles.

**NOTE**

For Research Use Only. Not for diagnostic, therapeutics, prophylactic or in vivo use.