

DATASHEET

PAP-2b Rabbit Polyclonal Antibody

CAT. NO. APA16551

KEY FEATURES

Target	PAP-2b	Source / Host	Rabbit
Reactivity	Human, Mouse, Rat	Clonality	Polyclonal
Applications	WB, IHC	Conjugation	Unconjugated
Form / Buffer	Liquid in 0.42% Potassium phosphate, 0.87% Sodium chloride, pH 7.3, 30% glycerol, and 0.01% sodium azide.		Storage at -20°C

BACKGROUND

Magnesium-independent phospholipid phosphatase of the plasma membrane that catalyzes the dephosphorylation of a variety of glycerolipid and sphingolipid phosphate esters including phosphatidate/PA, lysophosphatidate/LPA, diacylglycerol pyrophosphate/DGPP, sphingosine 1-phosphate/S1P and ceramide 1-phosphate/C1P . Also acts on N-oleoyl ethanolamine phosphate/N-(9Z-octadecenoyl)-ethanolamine phosphate, a potential physiological compound . Has both an extracellular and an intracellular phosphatase activity, allowing the hydrolysis and the cellular uptake of these bioactive lipid mediators from the milieu, regulating signal transduction in different cellular processes .

APPLICATION

To ensure optimal assay performance, AREX recommends conducting reagent titration tailored to each testing system for optimal detection results.

WB	1:500 - 1:2000
IHC	1:50 - 1:200

*Results are sample-specific. Please refer to your local assay conditions and test parameters for reference.

PRODUCT OVERVIEW

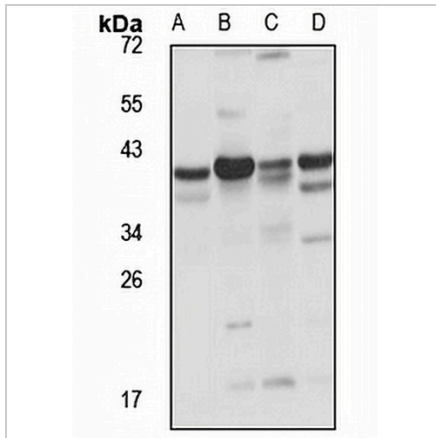
Description	Rabbit polyclonal antibody to PAP-2b
Specificity	Recognizes endogenous levels of PAP-2b protein
Antibody Type	Primary antibody
Immunogen	KLH-conjugated synthetic peptide of human PAP-2b. The exact sequence is proprietary.
Purification	The antibody was purified by immunogen affinity chromatography.
Molecular Weight	Predicted: 35 kD; Observed: 38 kD
Form/Buffer	Liquid in 0.42% Potassium phosphate, 0.87% Sodium chloride, pH 7.3, 30% glycerol, and 0.01% sodium azide.
Alternative Names	LPP3; Lipid phosphate phosphohydrolase 3; PAP2-beta; Phosphatidate phosphohydrolase type 2b; Phosphatidic acid phosphatase 2b; PAP-2b; PAP2b; Vascular endothelial growth factor and type I collagen-inducible protein; VCIP
Gene Symbol	PPAP2B
Entrez Gene	8613(Human); 67916(Mouse)
SwissProt	O14495(Human); Q99JY8(Mouse); P97544(Rat)

*AREX continuously optimizes our products. Webpage content may not reflect the latest updates. For inquiries, please contact info@arexbio.com or your local distributor.

*Clone Number, Reactivity, Source/Host and Clonality can be found in the product name and Key Features section above.

DATASHEET**PAP-2b Rabbit Polyclonal Antibody**

CAT. NO. APA16551

DATA

Western blot analysis of PAP-2b expression in HeLa (A), mouse brain (B), mouse kidney (C), rat lung (D) whole cell lysates. (Predicted band size: 35 kD; Observed band size: 38 kD)

STORAGE

Store at 4°C short term. For long term storage, store at -20°C, avoiding freeze/thaw cycles.

NOTE

For Research Use Only. Not for diagnostic, therapeutics, prophylactic or in vivo use.