

DATASHEET

PGC-1-beta Rabbit Polyclonal Antibody

CAT. NO. APA16554

KEY FEATURES

Target	PGC-1-beta	Source / Host	Rabbit
Reactivity	Human, Mouse, Rat	Clonality	Polyclonal
Applications	WB	Conjugation	Unconjugated
Form / Buffer	Liquid in 0.42% Potassium phosphate, 0.87% Sodium chloride, pH 7.3, 30% glycerol, and 0.01% sodium azide.		Storage at-20°C

BACKGROUND

Plays a role of stimulator of transcription factors and nuclear receptors activities. Activates transcriptional activity of estrogen receptor alpha, nuclear respiratory factor 1 (NRF1) and glucocorticoid receptor in the presence of glucocorticoids. May play a role in constitutive non-adrenergic-mediated mitochondrial biogenesis as suggested by increased basal oxygen consumption and mitochondrial number when overexpressed. May be involved in fat oxidation and non-oxidative glucose metabolism and in the regulation of energy expenditure. Induces the expression of PERM1 in the skeletal muscle in an ESRRA-dependent manner.

APPLICATION

To ensure optimal assay performance, AREX recommends conducting reagent titration tailored to each testing system for optimal detection results.

WB	1:500 - 1:2000
----	----------------

*Results are sample-specific. Please refer to your local assay conditions and test parameters for reference.

PRODUCT OVERVIEW

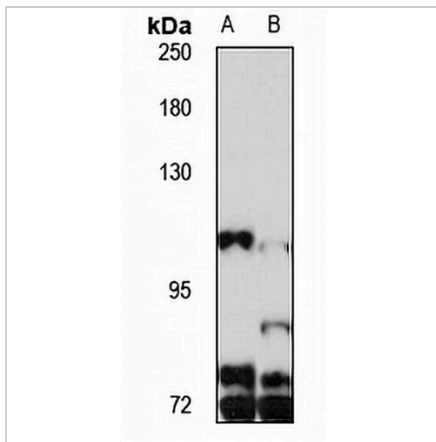
Description	Rabbit polyclonal antibody to PGC-1-beta
Specificity	Recognizes endogenous levels of PGC-1-beta protein
Antibody Type	Primary antibody
Immunogen	KLH-conjugated synthetic peptide of human PGC-1-beta. The exact sequence is proprietary.
Purification	The antibody was purified by immunogen affinity chromatography.
Molecular Weight	Predicted: 113 kD; Observed: 113 kD
Form/Buffer	Liquid in 0.42% Potassium phosphate, 0.87% Sodium chloride, pH 7.3, 30% glycerol, and 0.01% sodium azide.
Alternative Names	PERC; PGC1; PGC1B; PPARGC1; Peroxisome proliferator-activated receptor gamma coactivator 1-beta; PGC-1-beta; PPAR-gamma coactivator 1-beta; PPARGC-1-beta; PGC-1-related estrogen receptor alpha coactivator
Gene Symbol	PPARGC1B
Entrez Gene	133522(Human); 170826(Mouse); 291567(Rat)
SwissProt	Q86YN6(Human); Q8VHJ7(Mouse); Q811R2(Rat)

*AREX continuously optimizes our products. Webpage content may not reflect the latest updates. For inquiries, please contact info@arexbio.com or your local distributor.

*Clone Number, Reactivity, Source/Host and Clonality can be found in the product name and Key Features section above.

DATASHEET**PGC-1-beta Rabbit Polyclonal Antibody**

CAT. NO. APA16554

DATA

Western blot analysis of PGC-1-beta expression in MCF7 (A), mouse brain (B) whole cell lysates. (Predicted band size: 113 kD; Observed band size: 113 kD)

STORAGE

Store at 4°C short term. For long term storage, store at -20°C, avoiding freeze/thaw cycles.

NOTE

For Research Use Only. Not for diagnostic, therapeutics, prophylactic or in vivo use.