

**DATASHEET**

**Liprin-alpha-3 Rabbit Polyclonal Antibody**

CAT. NO. APA16557

**KEY FEATURES**

Target	Liprin-alpha-3	Source / Host	Rabbit
Reactivity	Human, Mouse, Rat	Clonality	Polyclonal
Applications	WB	Conjugation	Unconjugated
Form / Buffer	Liquid in 0.42% Potassium phosphate, 0.87% Sodium chloride, pH 7.3, 30% glycerol, and 0.01% sodium azide.		Storage at-20°C

**BACKGROUND**

May regulate the disassembly of focal adhesions. May localize receptor-like tyrosine phosphatases type 2A at specific sites on the plasma membrane, possibly regulating their interaction with the extracellular environment and their association with substrates.

**APPLICATION**

To ensure optimal assay performance, AREX recommends conducting reagent titration tailored to each testing system for optimal detection results.

WB	1:500 - 1:2000
----	----------------

\*Results are sample-specific. Please refer to your local assay conditions and test parameters for reference.

**PRODUCT OVERVIEW**

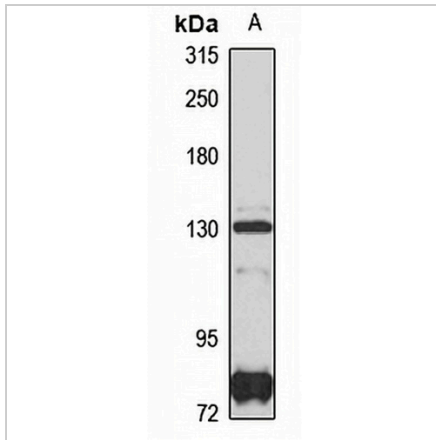
Description	Rabbit polyclonal antibody to Liprin-alpha-3
Specificity	Recognizes endogenous levels of Liprin-alpha-3 protein
Antibody Type	Primary antibody
Immunogen	Recombinant fusion protein of human Liprin-alpha-3. The exact sequence is proprietary.
Purification	The antibody was purified by immunogen affinity chromatography.
Molecular Weight	Predicted: 132; Observed: 133 kD
Form/Buffer	Liquid in 0.42% Potassium phosphate, 0.87% Sodium chloride, pH 7.3, 30% glycerol, and 0.01% sodium azide.
Alternative Names	KIAA0654; Liprin-alpha-3; Protein tyrosine phosphatase receptor type f polypeptide-interacting protein alpha-3; PTPRF-interacting protein alpha-3
Gene Symbol	PPFIA3
Entrez Gene	8541(Human); 76787(Mouse)
SwissProt	O75145(Human); P60469(Mouse); Q91Z79(Rat)

\*AREX continuously optimizes our products. Webpage content may not reflect the latest updates. For inquiries, please contact [info@arexbio.com](mailto:info@arexbio.com) or your local distributor.

\*Clone Number, Reactivity, Source/Host and Clonality can be found in the product name and Key Features section above.

**DATASHEET****Liprin-alpha-3 Rabbit Polyclonal Antibody**

CAT. NO. APA16557

**DATA**

Western blot analysis of Liprin-alpha-3 expression in HeLa (A) whole cell lysates.  
(Predicted band size: 132; 133 kD; Observed band size: 133 kD)

**STORAGE**

Store at 4°C short term. For long term storage, store at -20°C, avoiding freeze/thaw cycles.

**NOTE**

For Research Use Only. Not for diagnostic, therapeutics, prophylactic or in vivo use.