

DATASHEET

CYP Rabbit Polyclonal Antibody

CAT. NO. APA16558

KEY FEATURES

Target	CYP	Source / Host	Rabbit
Reactivity	Human, Mouse, Rat	Clonality	Polyclonal
Applications	WB	Conjugation	Unconjugated
Form / Buffer	Liquid in 0.42% Potassium phosphate, 0.87% Sodium chloride, pH 7.3, 30% glycerol, and 0.01% sodium azide.		Storage at-20°C

BACKGROUND

PPIase that catalyzes the cis-trans isomerization of proline imidic peptide bonds in oligopeptides and may therefore assist protein folding . May be implicated in the folding, transport, and assembly of proteins. May play an important role in the regulation of pre-mRNA splicing.

APPLICATION

To ensure optimal assay performance, AREX recommends conducting reagent titration tailored to each testing system for optimal detection results.

WB	1:500 - 1:2000
----	----------------

*Results are sample-specific. Please refer to your local assay conditions and test parameters for reference.

PRODUCT OVERVIEW

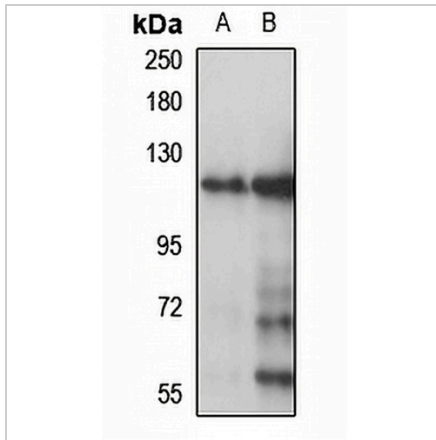
Description	Rabbit polyclonal antibody to CYP
Specificity	Recognizes endogenous levels of CYP protein
Antibody Type	Primary antibody
Immunogen	KLH-conjugated synthetic peptide of human CYP. The exact sequence is proprietary.
Purification	The antibody was purified by immunogen affinity chromatography.
Molecular Weight	Predicted: 40; Observed: 110 kD
Form/Buffer	Liquid in 0.42% Potassium phosphate, 0.87% Sodium chloride, pH 7.3, 30% glycerol, and 0.01% sodium azide.
Alternative Names	Peptidyl-prolyl cis-trans isomerase G; PPIase G; Peptidyl-prolyl isomerase G; CASP10; Clk-associating RS-cyclophilin; CARS-Cyp; CARS-cyclophilin; SR-cyclophilin; SR-cyp; SRcyp; Cyclophilin G; Rotamase G
Gene Symbol	PPIG
Entrez Gene	9360(Human); 228005(Mouse); 83624(Rat)
SwissProt	Q13427(Human); A2AR02(Mouse); O55035(Rat)

*AREX continuously optimizes our products. Webpage content may not reflect the latest updates. For inquiries, please contact info@arexbio.com or your local distributor.

*Clone Number, Reactivity, Source/Host and Clonality can be found in the product name and Key Features section above.

DATASHEET**CYP Rabbit Polyclonal Antibody**

CAT. NO. APA16558

DATA

Western blot analysis of CYP expression in HepG2 (A), HeLa (B) whole cell lysates. (Predicted band size: 40; 88 kD; Observed band size: 110 kD)

STORAGE

Store at 4°C short term. For long term storage, store at -20°C, avoiding freeze/thaw cycles.

NOTE

For Research Use Only. Not for diagnostic, therapeutics, prophylactic or in vivo use.