

DATASHEET

WIP1 Rabbit Polyclonal Antibody

CAT. NO. APA16561

KEY FEATURES

Target	WIP1	Source / Host	Rabbit
Reactivity	Human, Mouse, Rat	Clonality	Polyclonal
Applications	WB	Conjugation	Unconjugated
Form / Buffer	Liquid in 0.42% Potassium phosphate, 0.87% Sodium chloride, pH 7.3, 30% glycerol, and 0.01% sodium azide.		Storage at-20°C

BACKGROUND

Involved in the negative regulation of p53 expression . Required for the relief of p53-dependent checkpoint mediated cell cycle arrest. Binds to and dephosphorylates 'Ser-15' of TP53 and 'Ser-345' of CHEK1 which contributes to the functional inactivation of these proteins . Mediates MAPK14 dephosphorylation and inactivation . Is also an important regulator of global heterochromatin silencing and critical in maintaining genome integrity .

APPLICATION

To ensure optimal assay performance, AREX recommends conducting reagent titration tailored to each testing system for optimal detection results.

WB	1:500 - 1:2000
----	----------------

*Results are sample-specific. Please refer to your local assay conditions and test parameters for reference.

PRODUCT OVERVIEW

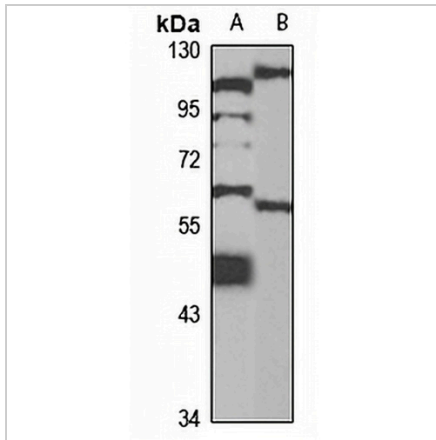
Description	Rabbit polyclonal antibody to WIP1
Specificity	Recognizes endogenous levels of WIP1 protein
Antibody Type	Primary antibody
Immunogen	Recombinant fusion protein of human WIP1. The exact sequence is proprietary.
Purification	The antibody was purified by immunogen affinity chromatography.
Molecular Weight	Predicted: 47; Observed: 67 kD
Form/Buffer	Liquid in 0.42% Potassium phosphate, 0.87% Sodium chloride, pH 7.3, 30% glycerol, and 0.01% sodium azide.
Alternative Names	WIP1; Protein phosphatase 1D; Protein phosphatase 2C isoform delta; PP2C-delta; Protein phosphatase magnesium-dependent 1 delta; p53-induced protein phosphatase 1
Gene Symbol	PPM1D
Entrez Gene	8493(Human); 53892(Mouse)
SwissProt	O15297(Human); Q9QZ67(Mouse)

*AREX continuously optimizes our products. Webpage content may not reflect the latest updates. For inquiries, please contact info@arexbio.com or your local distributor.

*Clone Number, Reactivity, Source/Host and Clonality can be found in the product name and Key Features section above.

DATASHEET**WIP1 Rabbit Polyclonal Antibody**

CAT. NO. APA16561

DATA

Western blot analysis of WIP1 expression in HeLa (A), rat testis (B) whole cell lysates.
(Predicted band size: 47; 66 kD; Observed band size: 67 kD)

STORAGE

Store at 4°C short term. For long term storage, store at -20°C, avoiding freeze/thaw cycles.

NOTE

For Research Use Only. Not for diagnostic, therapeutics, prophylactic or in vivo use.