

DATASHEET

PPM1J Rabbit Polyclonal Antibody

CAT. NO. APA16563

KEY FEATURES

Target	PPM1J	Source / Host	Rabbit
Reactivity	Human, Mouse, Rat	Clonality	Polyclonal
Applications	WB	Conjugation	Unconjugated
Form / Buffer	Liquid in 0.42% Potassium phosphate, 0.87% Sodium chloride, pH 7.3, 30% glycerol, and 0.01% sodium azide.		Storage at -20°C

BACKGROUND

This gene encodes the serine/threonine protein phosphatase. The mouse homolog of this gene apparently belongs to the protein phosphatase 2C family of genes. The exact function of this gene is not yet known.

APPLICATION

To ensure optimal assay performance, AREX recommends conducting reagent titration tailored to each testing system for optimal detection results.

WB	1:500 - 1:2000
----	----------------

*Results are sample-specific. Please refer to your local assay conditions and test parameters for reference.

PRODUCT OVERVIEW

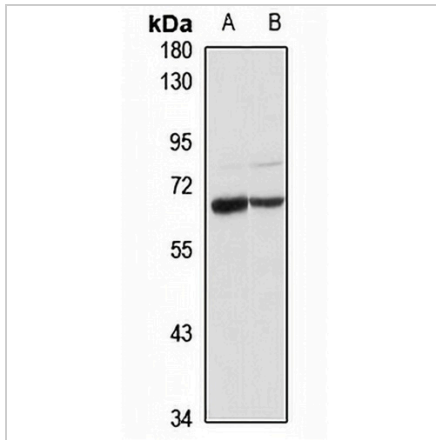
Description	Rabbit polyclonal antibody to PPM1J
Specificity	Recognizes endogenous levels of PPM1J protein
Antibody Type	Primary antibody
Immunogen	Recombinant fusion protein of human PPM1J. The exact sequence is proprietary.
Purification	The antibody was purified by immunogen affinity chromatography.
Molecular Weight	Predicted: 33; Observed: 60 kD
Form/Buffer	Liquid in 0.42% Potassium phosphate, 0.87% Sodium chloride, pH 7.3, 30% glycerol, and 0.01% sodium azide.
Alternative Names	PPP2CZ; Protein phosphatase 1J; Protein phosphatase 2C isoform zeta; PP2C-zeta
Gene Symbol	PPM1J
Entrez Gene	333926(Human); 71887(Mouse); 295341(Rat)
SwissProt	Q5JR12(Human); Q149T7(Mouse); Q641Y6(Rat)

*AREX continuously optimizes our products. Webpage content may not reflect the latest updates. For inquiries, please contact info@arexbio.com or your local distributor.

*Clone Number, Reactivity, Source/Host and Clonality can be found in the product name and Key Features section above.

DATASHEET**PPM1J Rabbit Polyclonal Antibody**

CAT. NO. APA16563

DATA

Western blot analysis of PPM1J expression in HeLa (A), mouse brain (B) whole cell lysates. (Predicted band size: 33; 54 kD; Observed band size: 60 kD)

STORAGE

Store at 4°C short term. For long term storage, store at -20°C, avoiding freeze/thaw cycles.

NOTE

For Research Use Only. Not for diagnostic, therapeutics, prophylactic or in vivo use.