

DATASHEET

PP2C-eta Rabbit Polyclonal Antibody

CAT. NO. APA16564

KEY FEATURES

Target	PP2C-eta	Source / Host	Rabbit
Reactivity	Human	Clonality	Polyclonal
Applications	WB	Conjugation	Unconjugated
Form / Buffer	Liquid in 0.42% Potassium phosphate, 0.87% Sodium chloride, pH 7.3, 30% glycerol, and 0.01% sodium azide.		Storage at -20°C

BACKGROUND

Protein phosphatase 1M (PPM1M), also known as Protein phosphatase 2C isoform eta, PP2C-eta, PP2CE. Belongs to the PP2C family Subcellular location: Nucleus

APPLICATION

To ensure optimal assay performance, AREX recommends conducting reagent titration tailored to each testing system for optimal detection results.

WB	1:500 - 1:1000
----	----------------

*Results are sample-specific. Please refer to your local assay conditions and test parameters for reference.

PRODUCT OVERVIEW

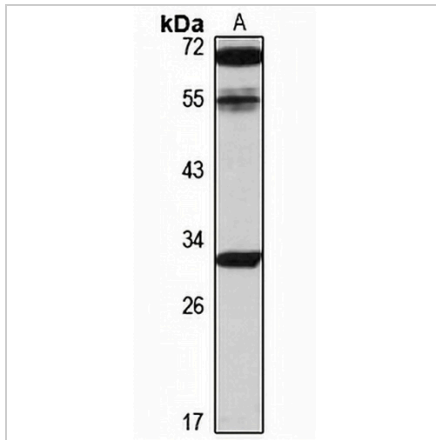
Description	Rabbit polyclonal antibody to PP2C-eta
Specificity	Recognizes endogenous levels of PP2C-eta protein
Antibody Type	Primary antibody
Immunogen	Recombinant fusion protein of human PP2C-eta. The exact sequence is proprietary.
Purification	The antibody was purified by immunogen affinity chromatography.
Molecular Weight	Predicted: 13; Observed: 30 kD
Form/Buffer	Liquid in 0.42% Potassium phosphate, 0.87% Sodium chloride, pH 7.3, 30% glycerol, and 0.01% sodium azide.
Alternative Names	PPM1E; Protein phosphatase 1M; Protein phosphatase 2C isoform eta; PP2C-eta; PP2CE
Gene Symbol	PPM1M
Entrez Gene	132160(Human); 67905(Mouse)
SwissProt	Q96MI6(Human); Q8BU27(Mouse)

*AREX continuously optimizes our products. Webpage content may not reflect the latest updates. For inquiries, please contact info@arexbio.com or your local distributor.

*Clone Number, Reactivity, Source/Host and Clonality can be found in the product name and Key Features section above.

DATASHEET**PP2C-eta Rabbit Polyclonal Antibody**

CAT. NO. APA16564

DATA

Western blot analysis of PP2C-eta expression in mouse lung (A) whole cell lysates.
(Predicted band size: 13; 18; 27; 30 kD; Observed band size: 30 kD)

STORAGE

Store at 4°C short term. For long term storage, store at -20°C, avoiding freeze/thaw cycles.

NOTE

For Research Use Only. Not for diagnostic, therapeutics, prophylactic or in vivo use.